

UNCONTROLLED IF DOWNLOADED OR PRINTED

The content of this Handbook is only correct as of
25/11/2025

Please refer to the online Handbook for the latest updates

Producing the School Census Spring Return

**English Pupil Referral
Units**

applicable to 7.226 onwards

Handbook

NOTE The contents of these graphics (dates, names, panel numbers, etc.) are examples only of what you might expect to see when using SIMS.

C | Contents

01 Introduction	1
Overview	1
How has the School Census Spring Return Changed?	1
Steps to Producing the School Census Return.....	2
Where to Find More Information.....	4
02 Preparing for the School Census Spring Return	5
Setting SIMS Permissions	5
Where to find More Information about Permissions.....	6
What Version of SIMS is Required?	6
Preparing Data for the School Census Return	6
03 Producing the School Census Spring Return	11
Creating a New School Census Return	11
Configuring the Census Folder	13
Specifying the Security Message for Reports	14
Editing Census Details	14
Calculating All Details	15
Editing School Information	16
Information for Academies	17
Editing School Childcare Details.....	18
Managing Early Years Data	22
Editing Early Years.....	22
Updating Early Years Information.....	24
Editing Early Years Pupil Premium Receipt	27
Editing Two Year Old Basis for Funding	29
Editing Pupil/Students with Top-Up Funding	29
Editing Pupil/Student Post Looked After Arrangements	31
Updating Funding and Monitoring	34
Editing Funding and Monitoring	34
Managing School Dinners Taken on Census Day	36
Using Dinner Money to Calculate School Dinners Taken on Census Day	37
Using Attendance to Calculate School Dinners Taken on Census Day	38
Using Manual Entry to Record School Dinners Taken on Census Day	39
Updating Time in Unit	40
Resetting Time in Unit Values	41

Identifying which Pupils have no Hours Specified	41
Entering Attendance Information	41
SIMS Attendance/Lesson Monitor Users	42
Entering Information about Teenage Mothers	44
04 Completing the School Census Return	45
Creating and Validating the School Census Return	45
Resolving Validation Errors and Checking Queries	46
Producing Detail Reports	48
Generating Detail Reports	54
Printing a Report from your Web Browser	56
Deleting Temporary Web Browser Files	56
Producing the Summary Report	56
Generating the Summary Report.....	57
Editing an Unauthorised Return	57
Authorising the Return	58
Submitting the Return	60
Retrieving Authorised Census Return Files	60
Copying a Return	61
Deleting an Unauthorised Return.....	62
Index	63

01 | Introduction

Overview.....	1
How has the School Census Spring Return Changed?.....	1
Steps to Producing the School Census Return	2
Where to Find More Information	4

Overview

This handbook provides the information needed by Pupil Referral Units in England to complete the School Census Spring Return.

The School Census Spring Return is required to be completed by maintained Nursery schools, Primary schools, Middle schools, Secondary schools, All-Through schools, Special schools, Pupil Referral Units (PRUs), City Technology Colleges (CTCs) and Academies (including free schools) in England. Non-maintained Special schools are also required to submit the return.

Currently, there are three School Census returns each year (i.e. Spring, Summer and Autumn), which collect detailed information about school characteristics and student details, e.g. student address, free school meals, exclusions, etc. Different data is collected depending on which return is being prepared and your school phase.

A list of items collected from Pupil Referral Units in England for the School Census Spring Return is available in a later section of this handbook.

NOTE The contents of the graphics (dates, names, panel numbers, etc.) are examples only of what you might expect to see when using SIMS to produce the School Census Return.



More Information:

Preparing Data for the School Census Return on page 6

How has the School Census Spring Return Changed?

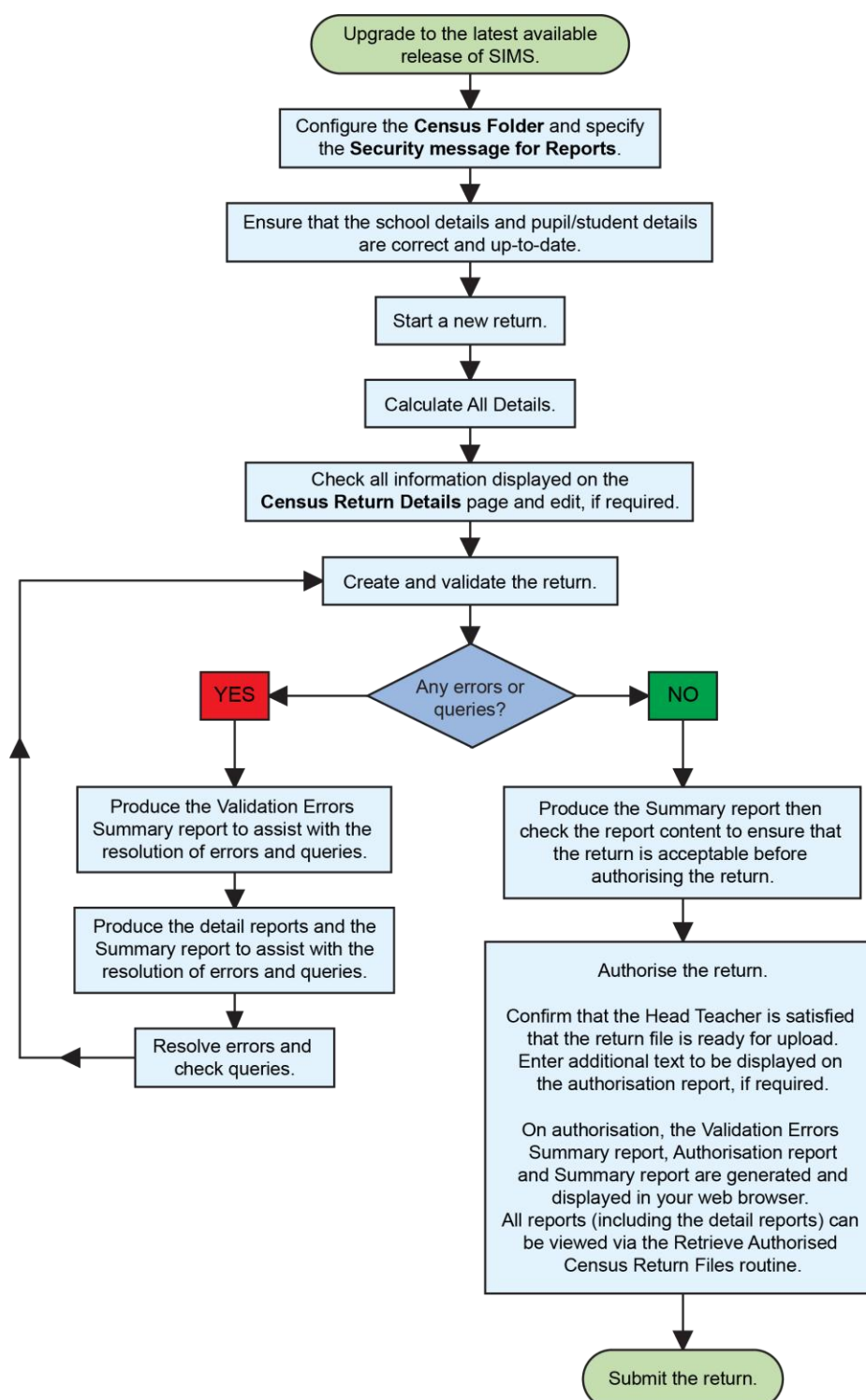
Changes to the School Census Spring Return include the following:

School Census Spring 2026 Key Dates

- Census day 15/01/2026
- Attendance collected from start of Autumn term 31/12/2025 (**not applicable to Nursery schools**)
- Exclusions collected from 21/04/2025 to 31/12/2025 (**not applicable to Nursery schools**)
- Alternative Provision Placements collected from 02/10/2025 to 15/01/2026 (**not applicable to Nursery schools**)
- Funding and Monitoring collected from 01/08/2025 to 15/01/2026 (**not applicable to Nursery schools**)
- Learner Support collected from 01/08/2025 to 15/01/2026 (**not applicable to Nursery or Primary schools**)
- Free School Meal Eligibility collected from 03/10/2025 to 15/01/2026.

Steps to Producing the School Census Return

The process of producing the School Census can be separated into several steps, some of which might need to be repeated to eliminate validation errors and queries.



Where to Find More Information

Online help can be accessed by pressing **F1** or clicking the applicable **Help** button in SIMS.

A wide range of documentation is available from the SIMS **Documentation Centre**, including handbooks, quick reference sheets and tutorials. Click the **Documentation** button located on the top right-hand side of the SIMS **Home Page**, select the required category, then select the document you require.

Additional Information

In addition to this handbook, a preparation guide that outlines how to prepare your data for the School Census is also available from the [English Census handbooks page](#).

02| Preparing for the School Census Spring Return

Setting SIMS Permissions	5
What Version of SIMS is Required?	6
Preparing Data for the School Census Return	6

Setting SIMS Permissions

The following permissions are applicable to users who deal with returns.

Running the Return

To run the return, you must be a member of one of the following user groups in System Manager:

- Returns Manager
- Returns Operator.

Editing and Preparing Data

Users who edit and prepare data must have permissions to access additional areas of SIMS, e.g. pupil/student details, school details, etc. These users must be a member of the user groups applicable to the areas they are editing (please see *Where to find More Information about Permissions* on page 6).

Permissions Required to Import a Revised Fileset

The Import Fileset functionality enables updates to the Validation Errors Summary and the Summary report (derived from files supplied by the Statutory Body), and detail reports (provided by SIMS) to be imported into SIMS between SIMS releases.

To use the Import Fileset functionality (via **Tools | Setups | Import Fileset**), you must be a member of one of the following user groups in System Manager:

- Returns Manager
- System Manager.

For more information about the Import Fileset functionality, please refer to the applicable preparation guide. To access the SIMS **Documentation Centre**. Click the **Documentation** button located on the top right-hand side of the SIMS **Home Page**.

Where to find More Information about Permissions

Please contact your System Administrator/Manager if you are not sure whether you have the required permissions. For more information, please refer to the [Managing SIMS Users, Groups and Databases handbook](#).

The SIMS Permissions spreadsheet describing the numerous permissions available in SIMS is available on the [SIMS 7 Documentation Centre](#).

What Version of SIMS is Required?

To run the return, you must have the latest SIMS Release installed.

To check which version of SIMS is installed, open SIMS and then select **Help | About SIMS**. A dialog like the one shown in the following graphic is displayed.

The version should read 7.226 or later.



Preparing Data for the School Census Return

Before beginning the process of producing the return, it is advisable to spend time ensuring that all school level and pupil/student level information is present and accurate in SIMS. For example, ensure that school details are correct, all new pupil/students have been added to SIMS, all leavers have been recorded and where applicable all exclusions have been recorded, etc.

The following information is collected from Pupil Referral Units for the School Census Spring Return.

School Level Data

- School Characteristics:
 - LA number
 - DfE establishment number
 - school name
 - school phase
 - school type
 - highest and lowest national curriculum year
 - intake type

- governance
- school time
- school email address and school telephone number
- child mother indicator
- teenage mother places
- childcare facility indicator.
- Miscellaneous:
 - free school meals taken
 - School time
 - Types of childcare (e.g. before school, after school, etc.)
 - childcare provision on site
 - opening time and closing time
 - number of childcare places
 - able to offer places to everyone
 - childcare provider
 - other schools
 - number of weeks that the childcare provision is open.
 - signposted off site childcare provision
 - opening/closing
 - provider hours.

Pupil/Student Level Data

- Pupil/Student Identifiers:
 - unique pupil number (UPN) and former UPN
 - unique learner number (ULN)
 - surname, forename, middle names, preferred surname, former surname
 - sex
 - date of birth.
- Pupil/Student Characteristics:
 - ethnicity
 - first language
 - free school meal eligibility start date and end date, UK country in which the eligibility applies
 - school dinner taken
 - Youth Support Services Agreement (YSSA) indicator
 - service children in education indicator
 - top-up funding indicator
 - post looked after arrangements
 - funded hours, extended childcare hours, expanded funded hours, eligibility code, disability access fund indicator and hours at setting
 - funding and monitoring
 - early years pupil premium receipt (EYPPR)

- early years pupil premium basis of funding (EYPPBF)
- two year old basis for funding
- unit contact time (time in unit)
- young carer identified by parent/guardian or school.
- Pupil/Student Status: enrolment status, date of entry, date of leaving, part-time indicator, boarder indicator and actual national curriculum year group.
- Special Educational Needs:
 - SEN provision
 - SEN type ranking
 - SEN type for each SEN need.
- Alternative Provision Placement:
 - unique reference number (URN)
 - UK provider register number (UKPRN)
 - setting type
 - companies house number
 - alternative provision postcode
 - placement reason
 - placement entry date
 - SEN provision at end of entry
 - placement leaving date
 - SEN provision at placement date of leaving
 - attendance pattern and sessions per week.
- Termly Exclusion Information:
 - exclusion category
 - reason for exclusion
 - exclusion start date
 - actual number of sessions from which the pupil/student was excluded
 - SEN provision (formerly stage).
- Pupil/Student Home Address: pupil/student's home address details, including post code and unique property reference number (UPRN).
- Termly Attendance Information:
 - If SIMS Attendance is in use: all attendance categories are collected in the census.
 - If SIMS Attendance is not in use: possible sessions, sessions missed due to authorised absence, sessions missed due to unauthorised absence, attendance codes and number of sessions missed, sessions attending approved educational activity, sessions unable to attend due to exceptional circumstances.

For more information and instructions on all the preparations that need to be carried out before the census return is produced, please refer to the appropriate handbook in [Preparing and Producing the English School Census Handbooks](#).

The preparation guide, together with other useful School Census documentation, is available from the SIMS **Documentation Centre** (accessed via the **Documentation** button, which is located on the top right-hand side of the SIMS **Home Page**).

03 | Producing the School Census Spring Return

Creating a New School Census Return	11
Configuring the Census Folder	13
Specifying the Security Message for Reports	14
Editing Census Details.....	14
Editing School Information	16
Editing School Childcare Details	18
Managing Early Years Data	22
Editing Pupil/Students with Top-Up Funding	29
Editing Pupil/Student Post Looked After Arrangements	31
Updating Funding and Monitoring	34
Managing School Dinners Taken on Census Day.....	36
Updating Time in Unit	40
Entering Attendance Information.....	41
Entering Information about Teenage Mothers.....	44

Creating a New School Census Return

Before creating a new School Census return, ensure that all pupil/student and school information is present and up-to-date in SIMS.

The School Census Spring Return collects data for:

- all pupil/students on the register on census day.
- any additional pupil/students not on-roll on census day who:
 - had at least one Attendance session during the collection period (please see *Attendance Report* on page 49).
 - had exclusions (please see *Exclusions Report* on page 49).
 - had Learner Support funding during the collection period (please see *Learner Support Report* on page 51).
 - had funding and monitoring information (please see *Funding and Monitoring Report* on page 52).
 - had an alternative provision placement.

The **Census Folder** and **Security message for Reports** must be specified before clicking the **New** button to create a new return. A message is displayed if a census folder has not been defined.

It is possible to create more than one return. This enables you to carry out dry runs to determine what data needs to be added or updated. Any unwanted returns can be deleted, providing they have not been authorised (please see *Deleting an Unauthorised Return* on page 62).

NOTE For schools with a November exams season, it is possible for the School Census to be run during an exams embargo period.

1. Select **Routines | Statutory Returns | School Census** to load the School Census validation and reporting files.

NOTE The first time that the **Routines | Statutory Returns | School Census** menu route is selected during each SIMS session, there is a delay while the School Census files are loaded.

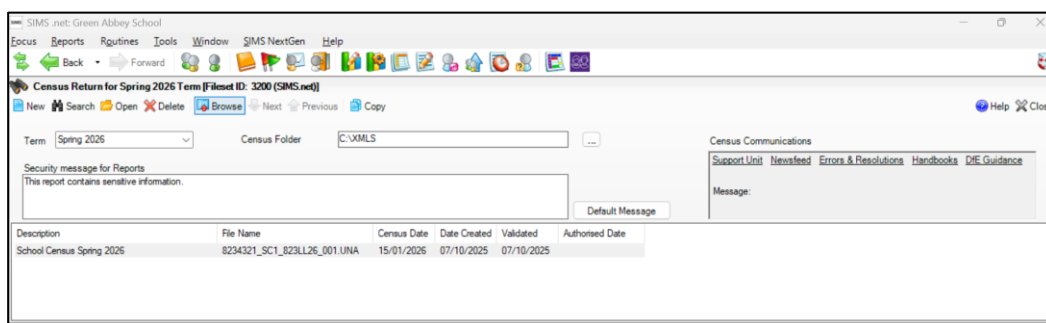
When the files are loaded, the **Census Return** browser is displayed.

The **Census Communications** message box includes links to the newsfeed, errors and resolutions document, handbooks, DfE guidance and Support Unit website (if available). Any additional information to help with the completion of the return is also displayed, if applicable.

NOTES

The **Fileset ID** is displayed in the browser header (for information only). The following graphic shows the position for the first release in the 3200 fileset series, where the fileset is obtained from the SIMS .net folder. As soon as any further release in the series is imported, the reference to the SIMS .net folder is no longer displayed. This is because the fileset data is then obtained from the document server. Instead the import date is displayed adjacent to the **Fileset ID**.

If a post-release consolidated database patch is applied, the patch ID and run date are also displayed in the browser.



By default, the **Term** field displays the appropriate term for the selected return, in this instance **Spring 2026**.

2. Ensure that the **Census Folder** is configured correctly and that the required **Security message for Reports** is specified, as described in the following sections.

Configuring the Census Folder

Before creating a return, the folder in which the return file will be saved must be specified.

IMPORTANT Due to the sensitive nature of some of the data stored in SIMS, careful consideration must be given when specifying the location of any folder into which you save sensitive data, e.g. census returns, imported and exported CTFs, etc.

You should be mindful of your school's responsibilities with respect to information security. Consider which users have access to the chosen folder, especially if the folder is shared on a server. Please refer to the government website for more information about securing your information (<https://www.gov.uk/service-manual/technology/securing-your-information>). If you are in any doubt, you should consult with your IT Security Officer before proceeding.

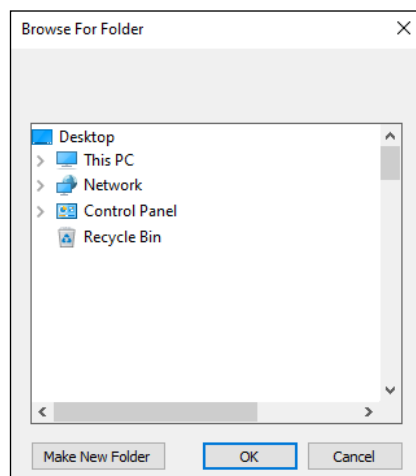
The General Data Protection Regulation (GDPR), which replaces the Data Protection Act 1998, is a directive for certain safeguards regarding the use of personal data. It is important that schools process all data (not just the data collected for the school census) in accordance with the full requirements of the GDPR.

Further information on the GDPR can be found on the Guide to the General Data protection Regulations (GDPR) page of the Information Commissioners Office (ICO) website (<https://ico.org.uk/for-organisations/guide-to-the-general-data-protection-regulation-gdpr>).

1. In the **Census Folder** field, enter the location of the folder where the return files are to be stored.

Alternatively, click the **Browse** button to display the **Browse For Folder** dialog.

 *Browse button*



2. Navigate to the location of the required folder and highlight it. If a suitable folder does not exist, click the **Make New Folder** button, then enter a suitable name for the new folder.

IMPORTANT If you are changing the location of the folder, ensure that authorised personnel only have access to the new folder, as the folder will contain sensitive data. For more information, please see the important note at the beginning of this section.

3. Click the **OK** button.
A message dialog requests confirmation that you want to continue.
4. Click the **OK** button to select or create the folder and return to the browser, where the new folder name is displayed.
5. Ensure that the **Security Message for Reports** is appropriate for your school.

Specifying the Security Message for Reports

The **Security message for Reports** field displays the text that will be included in the header of each report.

The default text (**This report contains sensitive information**) can be edited, if required. Clicking the **Default Message** button reverts the amended text to the original default text.

When the security message and census folder are specified, a new return can be created. Click the **New** button to display the **Census Return Details** page.

Editing Census Details

The **Census Details** panel displays the following read-only dates:

- The census date
- Attendance data
The **Attendance Collected from** date displays the start date of the Autumn term as recorded in the School Diary (via **Focus | School | School Diary**).
- Exclusions data
- AP (Alternative Provision) Placements
- FAM (Funding and Monitoring)
- Learner Support (Spring and Summer Census only)
- FSM (Free School Meal) eligibility (**applicable to on-roll pupil/students only**).

1. By default, the return **Description** is displayed as **School Census [Term] [Year]** but can be edited, if required, e.g. to identify a dry run.

1 Census Details			
Census Date	15/01/2026		
Description	School Census Spring 2026		
Attendance collected from	01/09/2025	Attendance collected to	31/12/2025
Exclusions collected from	21/04/2025	Exclusions collected to	31/12/2025
AP Placements collected from	02/10/2025	AP Placements collected to	15/01/2026
FAM collected from	01/08/2025	FAM collected to	15/01/2026
Learner Support collected from	01/08/2025	Learner Support collected to	15/01/2026
*FSM collected from	03/10/2025	FSM collected to	15/01/2026
*Only collected for on roll pupils not leavers			

WARNING Each description used must be unique. An error message is displayed if SIMS identifies a duplicate description.

A unique description also helps to identify the required return when displayed in the **Census Return for Spring Term** browser and can be particularly useful when creating dry runs or copies of existing returns.

2. Click the **Calculate All Details** button.

Calculating All Details

Clicking the **Calculate All Details** button extracts the required information from SIMS and displays the results in the applicable panels of the **Census Return Details** page.

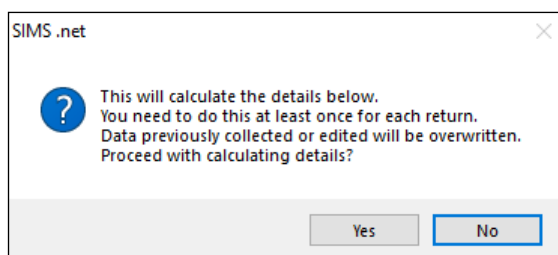
IMPORTANT You must calculate all details at least once to populate the various panels for each return.

Do not use the **Calculate All Details** button more than once if you wish to keep any changes you have made. Clicking the **Calculate All Details** button overwrites any previously collected or edited data (in every panel where details are calculated automatically) with the data currently stored in SIMS.

Any details that are calculated automatically should be checked and edited, if required.

1. Click the **Calculate All Details** button.

A message advises that any existing data currently shown on the **Census Return Details** page will be overwritten.



2. Click the **Yes** button to calculate all details.

At this point, depending on the number of pupil/students in the school, there might be a short delay while details are calculated.

The applicable panels on the **Census Return Details** page are then populated with data.

3. The return can be saved at any point by clicking the **Save** button.

Editing School Information

The **School Information** panel displays details that have previously been recorded on the **School Details** page in SIMS (**Focus | School | School Details**). The information displayed might vary depending on your school and the details entered, e.g. Academy specific information.

The details displayed are read-only but can be amended, if necessary, via the **School Detail** button.

 A screenshot of the "3 School Information" panel in the SIMS system. The panel contains several input fields for school details. The fields and their values are: School Name (Green Abbey School), LA (823), Establishment Number (1149), Telephone (851234), School E-mail Address (office@ga.org.uk), School Phase (PR), Pupil Referral Unit (PRU), School Type (LA Maintained PRUs), Governance (Community), Intake Type (Comprehensive), Lowest NC Year (7), and Highest NC Year (13). At the bottom right of the panel, there is a button labeled "School Detail".

1. If any details are missing or incorrect, click the **School Detail** button to display the **School Detail** dialog, where information applicable to your school is displayed.

School Details - Green Abbey School

Save Undo Help

1 Establishment 2 Address 3 Contact Details 4 Sites 5 Documents 6 Childcare 7 Support Unit Details

1 Establishment

School Name: Green Abbey School

LA: 823 Central Bedfordshire

Establishment Number: 1149

Unique Reference Number: 012345

UK Provider Reference Number:

School Phase: Pupil Referral Unit (PRU)

School Type: LA Maintained PRUs

School Governance: Community

Intake Type: Comprehensive

Previous School Name:

Previous Estab Number:

Previous URN Number:

Boarding Pupils: ☐ Nursery Class ☐

Head Teacher: Mr Adrian Blacker

Date Name Changed:

Earliest DOA:

Date Number Changed:

Special Class or Unit: ☐

Main Contact: Mr Adrian Blacker

OK Cancel

2. Add or amend the school details, selecting from the drop-down lists where applicable.

NOTE The **School Name**, **LA** number, **Establishment Number**, **School Phase** and **Curriculum Years** were set up when SIMS was installed. If any of these details are incorrect, please contact your Local Support Unit for assistance.

3. Ensure that the establishment's six-digit **Unique Reference Number** (URN) is entered. The number is available via the Get information about schools website (<https://get-information-schools.service.gov.uk/>), which is a register of schools and colleges in England.
4. Click the **Save** button, then click the **OK** button to return to the **Census Return Details** page, where the updated details are displayed.

Information for Academies

Academies should also ensure that the following information is recorded, if applicable:

- The **School Type** and **School Governance**.
Select **Academies** from the applicable drop-down lists.
- The **Previous Name** and **Date Name Changed**.
- The **Previous Estab Number** and **Earliest DOA** (date of admission).
This information is used by School Census. If the establishment number (DfE number) has changed for sponsor-led Academies, historical information is not collected, and the earliest date of admission is reported in the School Census.

- The **Previous URN Number** (used by other census returns) and **Date Number Changed**.

This information is used by the School Workforce Census. For all types of Academies opened in the collection period, the date that the establishment's URN changed is used to determine when the academy was formed. Historical information is not collected from before the date the URN changed.

Editing School Childcare Details

School childcare details are collected annually in the School Census Spring return.

Details can be entered via **Focus | School | School Details**, enabling the information to be maintained at any time throughout the year.

The **Childcare** panel (on the **Census Return Details** page) displays read-only childcare provision information that has been entered previously via School Details. Additional information can be added or existing data edited by clicking the **Edit** button. This provides a direct link to the **School Details** page.

If no childcare information is recorded, a validation error is triggered when the return is run.

Calculated childcare information can be edited, if required.

Childcare												Open
Type	On Site	Ope...	Closi...	N.	Offer...	Provider	Ot...	We...	Signposted	Signposted Opening/Closing	Signposted Provider Coverage	
Before School Childcare	No								Yes, list ...		Some - (less than 50%)	
After School Childcare	Yes		18:00	20		School	No		Yes, form...	Open until 6pm		
Holiday Childcare	No								Yes, form...	Not open 8am-6pm		
Under Fives Childcare	Yes						Yes		No			

1. Click the **Edit** button in the **Childcare** panel to display the **School Details** page.

School Details - Green Abbey School

Save Undo Help

1 Establishment 2 Address 3 Contact Details 4 Sites 5 Documents 6 Childcare 7 Support Unit Details

1 Establishment

School Name: Green Abbey School

LA: 823 Central Bedfordshire

Establishment Number: 1149

Unique Reference Number: 012345

UK Provider Reference Number:

School Phase: Pupil Referral Unit (PRU)

School Type: LA Maintained PRUs

School Governance: Community

Intake Type: Comprehensive

Previous School Name:

Previous Estab Number:

Previous URN Number:

Boarding Pupils: ☐ Nursery Class ☐

Head Teacher: Mr Adrian Blacker

Date Name Changed:

Earliest DOA:

Date Number Changed:

Special Class or Unit: ☐

Main Contact: Mr Adrian Blacker

OK Cancel

- Click the **Childcare** hyperlink to display the **Childcare** panel, where the current childcare details are displayed.

6 Childcare

Type	On Site	Ope...	Closi...	N.	Offer...	Provider	Ot...	We...	Signposted	Signposted Opening/Closing	Signposted Provider Coverage	Open
Before School Childcare	No								Yes, list ...		Some - (less than 50%)	
After School Childcare	Yes		18:00	20		School	No		Yes, form...	Open until 6pm		
Holiday Childcare	No								Yes, form...	Not open 8am-6pm		
Under Fives Childcare	Yes						Yes		No			

3. Double-click one of the four existing records to display the **Update Childcare Details** dialog. Alternatively, highlight a record then click the **Open** button.

The screenshot shows the 'Update Childcare Details' dialog box. The fields are as follows:

- Type: Before School Childcare
- On Site: Yes
- Opening Time: 07 : 00 hh:mm (24 hrs)
- Closing Time: : hh:mm (24 hrs)
- No of Childcare Places: 30
- Able to Offer Places to Everyone:
- Provider: School
- Other Schools: No
- Weeks Open:
- Signposted: No
- Open Before 8am:
- Listed Providers Cover 8am-6pm:
- Notes:

4. Enter the required details.
 - **Type** - based on the record you have opened, the type of childcare being provided is displayed automatically. The four types of childcare collected for the return are:
 - **Before School Childcare**
 - **After School Childcare**
 - **Holiday Childcare**
 - **Under Fives Childcare.**
 - **On Site** - select an applicable option from the drop-down list:
 - **Yes** - select this option if childcare is being provided on the school premises.
 - **No** - select this option if childcare is not being provided on the school premises.

- **Opening Time** - enter the time that the service becomes available (not applicable to after school care).
- **Closing Time** - enter the time that the service closed (not applicable to before school care).

NOTE Ensure that the time is entered in 24 hour format. A colon should be entered between the hours and the minutes, e.g. 07:00.

- **Number of Childcare Places** - enter the maximum number of childcare places that the service can provide.
- **Able to Offer Places to Everyone** – are you currently able to offer places to every parent who wants one?
 - **Yes**
 - **No**
 - **Information not available from external provider**
 - **Unknown.**
- **Provider** - select the description from the drop-down list that most accurately describes the provider of the service:
 - **School**
 - **School in Partnership** (with another provider)
 - **Other**
 - **Private/Independent Provider**
 - **Voluntary Provider.**
- **Other Schools** - is the service made available to children from other schools? Select as applicable from the drop-down list:
 - **Yes**
 - **No**
 - **Unknown.**
- **Weeks Open** - enter the number of weeks for which childcare is provided (applicable to holiday and under-fives childcare only).
- **Signposted** - one of the following options must always be selected from the drop-down list:
 - **Yes, formal arrangements including escort to/from the site** - select this option if your school has formal arrangements with another provider that provides childcare for your pupil/students, including escort to their site.
 - **Yes, list of providers that pick up from school** - select this option if a list of local providers that will pick up pupil/students from the school to help parents is provided.
 - **No**
 - **Not Known.**
- **Open Before 8am** – is the provision open 8am or earlier? (applicable to before-school childcare)

- **Open Until 6pm** – is the provision open to at least 6pm? (applicable to after-school childcare)
 - **Open 8am until 6pm** – is the provision open 8am or earlier and to at least 6pm? (applicable to holiday childcare)
 - **Listed Providers Cover 8am-6pm**
 - **All** – 100%
 - **Most** – (Over 50%)
 - **Some** – (less than 50%)
 - **None**
 - **Unknown.**
 - **Notes** - notes can be added and then edited later, if required.
5. Click the **OK** button to return to the **School Details** page.
 6. Click the **Save** button and then the **OK** button to return to the **Census Return Details** page.

Managing Early Years Data

Applicable to schools with Early Years children only

The early years data collected in the School Census is used to determine the amount of the dedicated schools grant (DSG) allocation provided to local authorities to fund their early years providers.

More information about the early years national funding formula (allocations and guidance) is available on the [GOV.UK website](https://www.gov.uk/government/topics/early-years).

The **Early Years** panel consists of three grids:

- **Early Years**
- **Early Years Pupil Premium Receipt**
- **2 Year Old Basis for Funding.**

Editing Early Years

Early Years data is collected from all schools that have early years pupil/students on-roll on census day. The following items are collected:

- Hours at Setting
- Funded Hours
- Disability Access Fund
- Eligibility Code
- Extended Funded Hours
- Expanded Funded Hours.

Funded Hours and Hours at Setting

Funded universal free entitlement hours are the total number of free childcare hours that a child receives. All three- and four-year-old pupil/students are eligible for 15 hours funded childcare a week. Advice about the eligibility of two year old children for funded childcare can be found on the DfE website (<https://www.gov.uk/help-with-childcare-costs/free-childcare-2-year-olds>).

Hours at Setting include funded free entitlement hours (as described previously) plus any additional hours funded by other means.

The hours collected in this return are for the week in which the census day falls.

Disability Access Fund

The Disability Access Fund (DAF) is payable as a lump sum once a year and awarded to children from 9 months to 4 years old who meet the following criteria:

- They are in receipt of child Disability Living Allowance (DLA) and
- They access their entitlement to free early learning and childcare, e.g. funded hours.

Disability Access Fund data is collected in this return for pupil/students who are in receipt of the fund on census day.

Additional information about the Disability Access Fund is available via the DfE website (<https://www.gov.uk/education/early-years-funding>).

Extended Funded Hours and Eligibility Code

Extended Funded Hours are the number of hours that a child can receive in addition to the initial 15 funded hours. Extended Funded Hours are applicable to three- and four-year-old pupil/students only.

In contrast to the universal entitlement (which only has an age criterion), for 30 hours free childcare, parents also need to meet a set of eligibility requirements (i.e. income requirements). A child will be entitled to the additional free hours from the term after both of the following conditions are satisfied: (1) the child has attained the age of three; (2) the child's parent has a current positive determination of eligibility from HMRC i.e. a valid eligibility code.

Parents can check online whether they could be eligible for a range of government childcare offers, including 30 hours, via [Childcare Choices](#) or the [Childcare Calculator](#).

The 11-digit Eligibility Code and the number of extended funded hours are collected in this return for the week in which the census day falls.

Expanded Funded Hours are the number of hours that a child can receive up to 30 hours. Expanded Funded Hours are applicable for 9-month to 2-year-old (inclusive) pupils with working parents who hold a valid eligibility code.

Extended Funded Hours information provided by the DfE can be found on their website (<https://www.gov.uk/government/publications/30-hours-free-childcare-1a-and-early-years-provider-guide>).

Recording Early Years

The required data can be recorded:

- via the **Edit** button in the **Early Years** panel

- via **Tools | Statutory Returns Tools | Update Early Years - Update Early Years** page. The data in the **Early Years** panel must be refreshed by clicking the **Recalculate** button after using the Update Early Years routine.

If data has been recorded previously, the values are displayed in the read-only **Early Years** panel. Only cohorts applicable to your school are displayed.

4 Early Years											
Edit											
Recalculate											
Name	Date of Birth	AdNo.	YTI	Reg	Age at 31/12/2025	Hours at Setting	Funded Hours	Disability Access Fund	Eligibility Code	Extended Funded Hours	Expanded Funded Hours
Ahmad, Carina	01/09/2022	002084	N1	N1	3	15	15				
Bridges, Stephen	26/12/2022	002134	N2	PM	3	30	15		98765432198	15	
Caldwell, Ley	04/01/2022	002088	N2	AM	3	30	15		87654321987	15	
Cheadle, Lauren	26/02/2022	002135	N2	PM	3	30	15		12345678901	15	
Christian, Laura	08/08/2021	002091	N2	AM	4	30	15		12345678902	15	
Dean, Rosanna	20/05/2022	002137	N2	PM	3	30	15		12345678904	15	
Franklinson, Alexis	14/11/2023	002138	N2	PM	2	30			98765432199		30

- In the **Early Years** panel, click the **Edit** button to display a message informing you that data has been brought forward from the previous census.
- Click the **OK** button to display the **Update Early Years** page. By default, the current term is displayed in the **Census** panel.

TIP To view the data recorded for a previous term (in the current academic year), select the required **Term** from the drop-down list.

Updating Early Years Information

Expanded Hours is applicable to children from 9 months old to 2 years old from Autumn 2024.

Early Years data is collected from all schools that have early years pupils on-roll on census day.

Information about the following items must be recorded while completing the return (via **Routines | Statutory Returns | School Census - Early Years** panel):

- Basis for EYPP Eligibility** - The basis for Early Years Pupil Premium (EYPP) funding should be specified when completing the return, i.e. **Not Eligible, Receipt-economic, Receipt-other, Receipt-economic and other, Receipt-unknown**.
- 2 Year Old Basis for Funding** - The basis of funding, i.e. **Economic Criteria, High level SEN or Disability or Looked After or Adopted From Care**, should be specified when completing the return.

Data for the following items can be recorded before completing the return (via **Tools | Statutory Return Tools | Update Early Years**):

- Funded Hours** - Funded hours are the total number of free childcare hours that a child receives.
- Hours at Setting** - Hours at setting include funded hours plus any additional hours funded by other means.

- **Disability Access Fund** - The child is in receipt of disability living allowance and receives funded hours - for 0-4-year-olds.
- **Eligibility Code** - The 11-digit Eligibility Code must be obtained from the Tax Office (HM Revenue & Customs) by parents who meet the extended funded hours criteria.
- **Extended Funded Hours** – up to 15 additional hours for 3- and 4-year-olds of working parents with a valid eligibility code (funded by the LA).
- **Expanded Funded Hours** - up to 30 hours for 9 months-2-year-olds of working parents with a valid eligibility code (funded by the LA).

The early years data is collected for the week in which the census day falls with the exception of disability access fund, which is collected for pupils who are in receipt of the fund on census day.

1. Select **Tools | Statutory Return Tools | Update Early Years** to display the **Update Early Years** page. Only cohorts applicable to your school are displayed.
2. Where available, the hours data is brought forward from the previous Census.

Update Early Years

Save Undo

Census Term: Spring 2026 Update Hours

Pupils View Age at 31/12/2025: All YTI: All Reg: All Status: All

Pupils

Expanded Hours are collected for pupils aged 9 months to 2 at 31/12/2025 if they have an Eligibility Code.
Extended Hours are collected for pupils aged 3 & 4 at 31/12/2025 if they have an Eligibility Code.

Name	Date of Birth	AdNo.	YTI	Reg	Age at 31/12/2025	Hours at Setting	Funded Hours	Disability Access Fund	Eligibility Code	Extended Funded Hours	Expanded Funded Hours
Ahmad,Carina	01/09/2022	002084	N1	N1	3	15	15				
Bridges,Stephen	26/12/2022	002134	N2	PM	3	30	15		98765432198	15	
Caldwell,Ley	04/01/2022	002088	N2	AM	3	30	15		87654321987	15	
Cheadle,Lauren	26/02/2022	002135	N2	PM	3	30	15		12345678901	15	
Christian,Laura	08/08/2021	002091	N2	AM	4	30	15		12345678902	15	
Dean,Rosanna	20/05/2022	002137	N2	PM	3	30	15		12345678904	15	
Franklinson,Alexis	14/11/2023	002138	N2	PM	2	30	0		98765432199		30

3. The **Update Hours** button is available to Primary phase schools only. It enables Hours at Setting, for pupils who are receiving free nursery care, to be updated automatically (provided that Early Years Attendance Patterns have been defined via **Focus | Pupil | Pupil Details**).
 - a. Click the **Update Hours** button (applicable to Primary phase schools only).
The number of Hours at Setting that the listed pupil/students are expected to attend during the census week (based on the early years provision times recorded as part of their attendance pattern) are displayed in the **Pupils** panel.
 - b. Edit the values, if required.

NOTE If your school does not use the Define Early Years Attendance Patterns functionality, the data can be entered in the grid manually.

4. To add or edit the number of **Hours at Setting, Funded Hours, Extended Funded Hours** or **Expanded Hours** for an individual pupil/student, select the required criteria in the **Pupils View** panel.
5. In the **Pupils** panel, highlight the required pupil/student, click the applicable cell and then enter the required number of hours.

IMPORTANT Values for **Funded Hours, Hours at Setting, Extended Funded Hours** and **Expanded Funded Hours** should be entered using two decimal places. For example, 1 hour 15 minutes must be entered as 1.25. Zero (0) is an accepted value.

If the value entered is within the range accepted by SIMS but is higher than what the DfE expects, a validation error is displayed when the return is created and validated. An explanation as to why the value is higher should be recorded on the COLLECT Portal.

6. If most of the pupil/students are receiving the same number of hours, the following method can be used to populate the column quickly:
 - a. In the **Pupils View** panel, select the required year group from the Year Taught In (**YTI**) drop-down list. The selected pupil/students only are displayed in the **Pupils** panel.
 - b. Right-click in the **Pupils** panel, then select **Select All** from the drop-down list.
 - c. Click in one of the highlighted cells of the column you wish to populate, i.e. **Hours at Setting, Funded Hours, Extended Funded Hours** or **Expanded Funded Hours**, then enter the number of hours that is applicable to most pupil/students.
 - d. This number is then entered automatically for all the selected pupil/students.
 - e. Click to the right of the grid to deselect all.
 - f. Edit the entry for each pupil/student who is receiving a different number of hours. This is achieved by highlighting the required pupil/student, clicking the associated **Hours at Setting, Funded Hours, Extended Funded Hours** or **Expanded Funded Hours** cell (as applicable) then entering the required number.
7. Indicate whether the pupil/students are in receipt of the **Disability Access Fund**. Click the applicable cell then select **Yes** or **No** from the drop-down list.
8. Enter the 11-digit **Eligibility Code** in the applicable cell, if in receipt of extended funded hours.

IMPORTANT Each pupil/student must have a different Eligibility code. Ensure that all 11 digits are entered.

9. Click the **Save** button.
If there are any pupil/students for whom zero hours have been recorded, a message is displayed. Click the **Yes** button to save the data or the **No** button to return to the **Update Hours** page, where the number of hours can be entered.

10. Click the **OK** button to return to the **Census Return Details** page, where the updated hours are displayed.

IMPORTANT

If, while completing the return, any of the following processes are performed, click the **Recalculate** button (located at the top right-hand side of the **Early Years** panel) to ensure that the up-to-date data is displayed:

- any information is updated via **Tools | Statutory Return Tools | Update Early Years**
- a new pupil/student is added in SIMS
- a pupil/student's date of birth is amended.

Please note that when information is updated via the **Edit** button, the **Early Years** panel is refreshed automatically.

Using the Status to determine if Hours at Setting or Funded Hours are recorded

1. On the **Census Return Details** page, click the **Edit** button (located in the **Early Years** panel) to display the **Update Early Years** page.
2. In the **Pupils View** panel, ensure that the required **Age at date**, **YTI** and **Reg** group are selected and then select **No Hours at Setting** (or **No Funded Hours**) from the **Status** drop-down list.

Only pupil/students who do not have an entry for **Hours at Setting** (or **Funded Hours**) are displayed.

3. Enter the required values for these pupil/students as described previously.
4. Click the **Save** button.

Editing Early Years Pupil Premium Receipt

The data collected in the Spring School Census provides the DfE with information about Early Years Pupil Premium funding allocated to schools. Information is required regarding children 9 months to four years old who attend school and receive Early Years Pupil Premium (EYPP). Data is required for the following pupils:

- All 9 months to three-year-old pupils
- Four-year-old pupils (in years E1, E2, N1 and N2 including Nursery schools).

Children are eligible for Early Years Pupil Premium (EYPP) if they are receiving any hours of funded early education and any of the following:

- they meet the benefits-related criteria for Free School Meals

NOTE Meals delivered as part of the universal entitlement are not Free School Meals.

- they are in care
- they have been adopted from care.

The second grid in the **Early Years** panel deals with a pupil/student's **Early Years Pupil Premium Receipt** only. The pupils displayed in this grid make up a sub-set of the first grid (i.e. relevant three- and four-year-olds).

Early Years Pupil Premium Receipt							
Name	Date of Birth	AdNo.	YTI	Reg	Age at 31/12/2025	In Care	Basis for EYPP Eligibility
Ahmad, Carina	01/09/2022	002084	N1	N1	3	No	Not Eligible
Bridges, Stephen	26/12/2022	002134	N2	PM	3	Yes	Not Eligible
Caldwell, Ley	04/01/2022	002088	N2	AM	3	No	Not Eligible
Cheadle, Lauren	26/02/2022	002135	N2	PM	3	No	Not Eligible
Christian, Laura	08/08/2021	002091	N2	AM	4	No	Not Eligible
Dean, Rosanna	20/05/2022	002137	N2	PM	3	No	Not Eligible
Franklinson, Alexis	14/11/2023	002138	N2	PM	2	No	Not Eligible

Specify the reason why the pupil is receiving EYPP (if applicable) by clicking the cell adjacent to their name, then selecting the required option from the **Basis for EYPP Eligibility** drop-down list:

- **Not Eligible**
- **Receipt - Economic**
In receipt through eligibility for economic reasons, i.e. where they are in receipt via eligibility for the benefits-related criteria for FSM.
- **Receipt - Other**
In receipt through eligibility for other reasons, i.e. where they are in receipt due to eligibility for being in care or due to leaving care through adoption, a special guardianship order or a child arrangement order.
- **Receipt - Economic and Other**
In receipt through eligibility for both reasons, i.e. where they are in receipt through eligibility for both economic and other reasons.
- **Receipt - Unknown**
In receipt through eligibility for unknown basis, i.e. where the school knows the child is in receipt of EYPP (due to receiving funding from the local authority) but does not necessarily know the reason why.

WARNING If you **Recalculate** or **Calculated All Details** before saving, your **Basis for EYPP Eligibility** edits are lost.



More Information:

EYPPR Report on page 52

Editing Two Year Old Basis for Funding

The **2 Year Old Basis for Funding** grid (located in the **Early Years** panel) enables schools to enter the basis of funding for each pupil/student.

2 Year Old Basis for Funding							
Name	Date of Birth	AdNo.	YTI	Reg	Economic Criteria	High level SEN or Disability	Looked After or Adopted From Care
Franklinson, Alexis	14/11/2023	002138	N2	PM	Yes	No	No
Franklinson, Tyreece	14/11/2023	002139	N2	PM	Yes	Yes	No

1. Click a cell in the **Economic Criteria** column, then select **Yes** or **No** from the drop-down list to indicate if this basis for funding applies to the adjacent two year old pupil.
2. Repeat this process in the **High level SEN or Disability** and **Looked After or Adopted From Care** columns.

NOTE A pupil might meet one or more of the criterions. Select **Yes** to each applicable basis for funding.

3. Repeat this process for all two-year-old pupil/students.



More Information:

2 Year Old Basis for Funding Report on page 53

Editing Pupil/Students with Top-Up Funding

Top-up funding is supplied to schools, in most cases by the Local Authority, to meet the additional costs of support for high needs pupil/students.

The **Top-up Funding** panel enables you to record the on-roll pupil/students for whom your school is receiving top-up funding on census day.

If the pupil/students with top-up funding have been recorded previously via **Tools | Statutory Return Tools | Update Top-Up Funding**, the data is displayed in the **Top-up Funding** panel.

3 Top-up Funding						
Surname	Preferred Surname	Forename	YTI	Reg	SEN	Ever in
Abdullah	Abdullah	Tamwar	8	8E	K	No
Marsden	Marsden	Olivia	8	8B		No
Terrell	Terrell	Kiara	10	10B		No
Tuner	Tuner	Lacey	11	11E		No

The information displayed in the **Top-up Funding** panel is read-only. Updating top-up funding information, e.g. adding or removing a pupil/student, must be done via the **Edit** button.

1. Click the **Edit** button to display the **Update Pupil (or Student)s with Top-up Funding** dialog. The pupil/students currently recorded as having top-up funding are displayed in the **Top-up Funding** list (located in the bottom half of the page).

03| Producing the School Census Spring Return

2. Use the **Students On-Roll on Census Day** search criteria to locate the additional pupil/students you wish to record as having top-up funding.

TIP Click the **Search** button to display a list of all pupil/students who have not been defined as having top-up funding. Alternatively, enter all or part of the required search criteria then click the **Search** button.

Term Students On-Roll on Census Day

Surname Forename YTI Reg

Preferred Surname SEN Ever in care at this school

Surname	Preferred Surname	Forename	YTI	Reg	SEN	Ever in Care
Smith	Smith	Alex	13	L		No
Smith	Smith	Aria	10	10B		No
Smith	Smith	Daniel				No
Smith	Smith	Erin	8	8B		No
Smith	Smith	Jade				No
Smith	Smith	Osias				No
Smith	Smith	Tabitha	11	11E		No
Smith	Smith	Tristan				No
Smitham	Smitham	Jason	13	Q		No

3. Highlight the pupil/student(s) who you want to record as having top-up funding, then click the **Add** button to move the selected pupil/student(s) to the **Top-up Funding** list.

One or more pupil/students can be selected using the **Ctrl+click** or **Shift+click** functionality.

Term: Spring 2023 Students On-Roll on Census Day

Surname: smith Forename: YTI: All Reg: All

Preferred Surname: SEN: <Any> Ever in care at this school: <Any> Search

Surname	Preferred Surname	Forename	YTI	Reg	SEN	Ever in Care
▶ Smith	Smith	Alex	13	L		No
Smith	Smith	Aria	10	10B		No
Smith	Smith	Erin	8	8B		No
Smith	Smith	Jade				No
Smith	Smith	Osias				No
Smith	Smith	Tabitha	11	11E		No
Smith	Smith	Tristan				No
Smitham	Smitham	Jason	13	Q		No

Top-up Funding + Add ✗ Remove

Surname	Preferred Surname	Forename	YTI	Reg	SEN	Ever in Care
▶ Abdullah	Abdullah	Tamwar	9	9A	K	No
Marsden	Marsden	Olivia	9	9B		No
Terrell	Terrell	Kiara	10	10D		No
Tuner	Tuner	Lacey	12			No
Smith	Smith	Daniel				No

- To remove a pupil/student from the **Top-up Funding** list, highlight the required pupil/student, then click the **Remove** button. The pupil/student's record is moved to the **Students On-Roll on Census Day** list, from where it can be reselected, if required.
- Click the **Update** button to save the data and arrange the list of pupil/students in **Surname** order.
- Click the **OK** button located at the bottom right-hand side of the screen to return to the **Census Return Details** page, where the updated information is displayed in the **Top-up Funding** panel.



Additional Resources:

Preparing for the School Census Spring Return guide

Editing Pupil/Student Post Looked After Arrangements

The Post Looked After Arrangements routine provides schools with the ability to record whether pupil/students who are on-roll on census day were looked after immediately before adoption or prior to being the subject of a residence or special guardianship order.

If the pupil/students with post looked after arrangements (PLAA) have been recorded previously via **Tools | Statutory Return Tools | Update Post Looked After Arrangements**, the data is displayed in the **Post Looked After Arrangements** panel.

03| Producing the School Census Spring Return

1. Click the **Recalculate** button (in the **Post Looked After Arrangements** panel) to ensure that all pupil/students who already have a PLAA status are displayed.

4 Post Looked After Arrangements Edit Recalculate

Surname	Preferred Surname	Forename	YTI	Reg	Ever in C...	Ceased to be looked after through
Aaron	Aaron	Chris	12		No	Adoption from England and Wales
Adams	Adams	Adam	13	G	No	Adoption from state care outside of England and Wales
Celestena	Celestena	Romano	9	9F	No	Special guardianship order (SGO) from England and Wales
Formichella	Formichella	Rosetta	12		No	Adoption from England and Wales
France	France	Damon	12		No	Adoption from England and Wales

The information displayed in the **Post Looked After Arrangements** panel is read-only. Updating the information, e.g. editing the PLAA status or adding a pupil/student, must be done via the **Edit** button.

2. Click the **Edit** button to display the **Update Pupil (or Student)s Post Looked After Arrangements** page. Any pupil/students currently recorded as having PLAA are displayed in the **Post Looked After Arrangements** list located in the bottom half of the page.
3. Use the **Students On-Roll on Census Day** search criteria to locate the additional pupil/students you wish to record as having PLAA.

TIP Click the **Search** button to display a list of pupil/students who have not been defined as having PLAA. Alternatively, enter all or part of the required search criteria then click the **Search** button.



Term: Spring 2023 Students On-Roll on Census Day

Surname: smith Forename: YTI: All Preferred Surname: Reg: All Ever in Care at this school: <Any> Search

Surname	Preferred Surname	Forename	YTI	Reg	Ever in Care
Smith	Smith	Alex	13	L	No
Smith	Smith	Aria	10	10B	No
Smith	Smith	Daniel			No
▶ Smith	Smith	Erin	8	8B	No
Smith	Smith	Jade			No
Smith	Smith	Tabitha	11	11E	No
Smith	Smith	Tristan			No
Smitham	Smitham	Jason	13	Q	No

4. Highlight the pupil/students who you want to record as having PLAA, then click the **Add** button to move the selected pupil/students automatically to the **Post Looked After Arrangements** list.

One or more pupil/students can be selected using the **Ctrl+click** or **Shift+click** functionality.

Post Looked After Arrangements  Add  Remove

Surname	Preferred Surname	Forename	YTI	Reg	Ever in Care	Ceased to be looked after through	Evidence Obtained
Aaron	Aaron	Chris	12		No	Adoption from England and Wales	<input checked="" type="checkbox"/>
Adams	Adams	Adam	13	G	No	Adoption from state care outside of England and Wales	<input type="checkbox"/>
Celestena	Celestena	Romano	9	9F	No	Special guardianship order (SGO) from England and Wales	<input checked="" type="checkbox"/>
Formichella	Formichella	Rosetta	12		No	Adoption from England and Wales	<input checked="" type="checkbox"/>
France	France	Damon	12		No	Adoption from England and Wales	<input type="checkbox"/>
Smith	Smith	Erin	8	8B	No	<div> Adoption from England and Wales Adoption from state care outside of England and Wales Special guardianship order (SGO) from England and Wales Residence order (RO) from England and Wales Child arrangement order (CAO) from England and Wales </div>	<input checked="" type="checkbox"/>

- For each pupil/student added to the **Post Looked After Arrangements** list, select the post looked after arrangement status by clicking in the applicable cell in the **Ceased to be looked after through** column, then selecting the required status from the drop-down list:
 - Adoption from England and Wales
 - Adoption from state care outside of England and Wales
 - Special guardianship order (SGO) from England and Wales
 - Residence order (RO) from England and Wales
 - Child arrangement order (CAO) from England and Wales.
- Select the **Evidence Obtained** check box if documents have been obtained that provide evidence of the post looked after arrangements.
If you indicate that evidence has been obtained, ensure that the applicable documents are stored securely either outside of SIMS or within the Document Management Server.

NOTE Evidence Obtained is not collected in the School Census return but should be recorded as proof of DfE/Ofsted compliance.

- To remove a name from the list, highlight it then click the **Remove** button. The record is moved to the **Students On-Roll on Census Day** list, from where it can be reselected, if required.
- Click the **Update** button to save the information and arrange the list of pupil/students in surname order.
If you have indicated that evidence has been obtained, you are reminded to ensure that the necessary documents are stored securely outside of SIMS or within the Document Management Server.
- Click the **OK** button to continue.
- Click the **OK** button (located at the bottom right-hand side of the screen) to return to the **Census Return Details** page, where the updated information is displayed in the **Post Looked After Arrangements** panel.



Additional Resources:

Preparing for the School Census Spring Return guide

**More Information:**

Post Looked After Arrangements Report on page 53

Updating Funding and Monitoring

The National Tutoring Programme has now ended but schools are to record if students receive school funded tutoring and if they repeat a post-16 year.

Tutoring is defined as those who are in receipt of school-funded tutoring. Repeating Post-16 Year is for post-16 students repeating a year. A pupil can be in receipt of both codes.

The information can be recorded via the **Tools** menu and maintained at any time during the academic year.

The information required is based on individual pupils:

- **Pupil/student in receipt of school-funded tutoring:** Applicable to all schools (except Nursery), with appropriate year group or age-ranges Pupils: Only applicable to pupils and in NCYearActual 1-14 Or where national curriculum year groups do not apply, aged 5 to 19 (as at 31 August) in NCYearActual 'X'.
- **Pupil/student repeating up to one full year of 16 to 19 funded provision:** Applicable to Secondary, All-Through and PRU / AP with appropriate year groups Pupils: Only applicable to pupils in NCYearActual 12 or above, with current single registration ('C') or current main dual registration ('M'). PRU / AP for any pupils with the following enrolment status: 'C', 'M', 'F' or 'O'.

Detailed guidance about the expectations and conditions attached to tutoring funding is available on the GOV.UK.

Editing Funding and Monitoring

If funding and monitoring details have been recorded previously via **Tools | Statutory Return Tools | Update Funding and Monitoring**, the information is displayed in the **Funding and Monitoring** panel.

NOTE Only pupil/students with funding and monitoring information are displayed in the **Funding and Monitoring** panel.

1. Click the **Recalculate** button (in the **Funding and Monitoring** panel) to ensure that the latest details are displayed.
2. If you wish to update the information, click the **Edit** button to display the **Update Funding and Monitoring** page.

Update Funding and Monitoring

Save Undo Report

Census

Academic Year: 2025/2026 On roll and leavers from 01/08/2025 to 31/07/2026

Effective Date: 11/11/2025

Students View

Age at 31/08/2025: All YTI: All Year Group: All Reg: All SEN: All Deprivation Pupil Premium: All FSMEver6: All Pupil Premium Indicator: All

Name	Date of Birth	Age at 31/08/2025	YTI	Year Group	Reg	Enrolment Status	DOL	SEN	Dep PP	FSM6	PP Ind	Repeating Post-16 Year	Starting New Programme	Tutoring	Notes
Abbot, James	27/04/2013	12	7	Year 7	7A	Single R..				No				✓	
Abdelkader, Mohamed	15/03/2012	13	9	Year 9	9C	Single R..		K	2025/2026	Yes	2025/2026				
Abdullah, Tamwar	12/01/2009	16	12	Year 12	G	Single R..		K		No		✓			

3. In the **Pupil (or Student) View** panel, specify the required filters. The content of the **Pupil (or Student)** panel changes to reflect the options selected.

Read-only pupil/student information is displayed in the columns on the left-hand side of the **Pupil (or Student)** panel. This information is shown as at the system date.

Cells with a white background are editable.

NOTE for Secondary, All-Through and Pupil Referral Units: Additional columns are available to record whether a pupil/student is **Repeating Post 16 Year** or **Starting New Programme**.

4. If applicable, right-click anywhere in the **Tutoring** column, then select the required option from the pop-up menu.
 - g. If most or all of the pupil/students have been receiving tutoring funding, select the **Check All** option.
 - h. Any pupil/students who have not been receiving tutoring funding can then be deselected by clicking the **Tutoring** cell adjacent to their name.
5. Enter **Notes**, if required. This information is for your school's use and is not collected in the census.
6. Click the **Save** button and then click the **OK** button to return to the **Census Return Details** page.

NOTE All validation errors (red cells) must be resolved before saving the data.

DfE guidance about Learner funding and monitoring (FAM) is available on the GOV.UK website (<https://www.gov.uk/guidance/complete-the-school-census/>).

Managing School Dinners Taken on Census Day

Applicable to schools with pupils in Reception, Year 1 and Year 2

All pupils in Reception, Year 1 and Year 2 in English state-funded schools are offered a Universal Infant School Meal, i.e. a hot meal at lunchtime. This applies to Academies, Free Schools and Pupil Referral Units, as well as to schools maintained by the local authority. The School Census Spring Return collects information about pupils who receive a Universal Infant School Meal (school dinner) on census day.

The **School Dinner Taken** panel displays all pupils in Reception, Year 1 and Year 2 who are on-roll on census day. The options available in the panel enable you to record pupils who have taken a Universal Infant School Meals on census day, so that accurate data can be included in the census.

NOTES The **Reference Date** is provided so that your school can report school dinners taken on an alternative date to census day, if required.

The pupils listed in the **School Dinner Taken** panel are those who are on-roll on census day. Whereas the data calculated via the **Calculate From Attendance** and the **Calculate From Dinner Money** buttons is based on the reference date.

If your school uses SIMS Dinner Money or SIMS Attendance, the number of dinners taken on census day can be calculated using the data recorded when using these modules. If either or both modules are not in use, the applicable **Calculate From** button(s), as displayed in the following graphic, are not displayed but the information can be recorded manually.

The screenshot shows the 'School Dinner Taken' panel. It includes a 'Reference Date' field (1) set to 19/01/2023. A note states 'All pupils including those eligible for FSM should be included below'. There are two buttons: 'Calculate From Attendance' (2) and 'Calculate From Dinner Money' (3). A 'Group By' dropdown is also present. The main table lists pupils with columns: Surname, Forename, YTI, Reg Group, Enrol Status, and School Dinner Taken. The table contains 17 rows of pupil data. On the right side of the table, there are 'Tick All' and 'Reset' buttons (4). At the bottom, there are 'Total Taken' and 'Total Not Taken' fields (5 and 6) with values 0 and 178 respectively.

Surname	Forename	YTI	Reg Group	Enrol Status	School Dinner Taken
Abbott	Jessica	2	2JB	Single Registration	
Abhra	Shauib	2	2JB	Single Registration	
Ackton	Charlotte	1	ELM	Single Registration	
Adams	Nancy	2	2GH	Single Registration	
Adams	Sadie	R	PINE	Single Registration	
Alala	Candis	1	OAK	Single Registration	
Alala	Michael	2	2GH	Single Registration	
Alyona	Tatyana	1	PINE	Single Registration	
Andrews	Richard	1	ELM	Single Registration	
Barden	Olivia	R	ASH	Single Registration	
Bartram	Piers	R	OAK	Single Registration	
Bateman	Vincent	R	PINE	Single Registration	
Bennet	Eloise	1	ASH	Single Registration	
Benson	Chantal	1	OAK	Single Registration	

1	By default, the Reference Date is set to census day. If, due to exceptional circumstance, e.g. flooding, pupils were unable to take a school dinner on census day, the reference date can be changed to a date that reflects the situation. However, the reference date must be within the Spring term date range.
2	Click the required column header to sort the data.
3	The Calculate From Attendance button is displayed only if SIMS Attendance is in use.
4	The Calculate from Dinner Money button is displayed only if SIMS Dinner Money is in use.
5	When the Reset button is clicked all existing ticks are removed from the School Dinner Taken column enabling you to start the process again.
6	The Total Taken and Total Not Taken provide an indication of whether the number of school dinners taken is correct or whether edits are required.

After the return has been created and validated, the School Dinner Taken detail report can be run to assist with the checking of results.



More Information:

School Dinner Taken Report on page 51

Using Dinner Money to Calculate School Dinners Taken on Census Day

If SIMS Dinner Money is in use, the Dinner Money data recorded for census day can be used to calculate the number of school dinners taken on census day.

Many users of SIMS Dinner Money also use SIMS Attendance. If this is the case the **Calculate From Attendance** button is also displayed.

However, it is recommended that the Calculate From Dinner Money routine is used in the first instance. This is because the Calculate From Attendance routine looks at all pupils with a present or late attendance mark on census day morning. These pupils could be taking any sort of meal on census day, e.g. going home for lunch, pack lunch brought from home, as well as meals provided by the school. The School Census return is only interested in school meals provided by the school.

SIMS Dinner Money takes into account these different meal types and populates the **School Dinner Taken** column with ticks where meals provided by the school only have been taken.

Reference Date: 19/01/2023 All pupils including those eligible for FSM should be included below

Group By: Calculate From Attendance Calculate From Dinner Money

Surname	Forename	YTI	Reg Group	Enrol Status	School Dinner Taken
Abbott	Jessica	2	2JB	Single Registration	
Abhra	Shaqib	2	2JB	Single Registration	
Abrams	Paul	1	ELM	Single Registration	
Ackton	Charlotte	2	2GH	Single Registration	✓
Aditya	Zayan	R	PINE	Single Registration	✓
Ainsley	Charlotte	1	OAK	Single Registration	✓
Alala	Michael	2	2GH	Single Registration	
Alberts	Courtney	1	PINE	Single Registration	
Andrews	Ching	1	ELM	Single Registration	✓
Andrews	Izabel	R	ASH	Single Registration	✓
Armitage	Elise	R	OAK	Single Registration	✓
Atkins	Austin	R	PINE	Single Registration	✓
Atkins	Portia	1	ASH	Single Registration	
Barnes	Isaac	1	OAK	Single Registration	✓

Total Taken: 91 Total Not Taken: 87

Tick All Reset

1. Click the **Calculate From Dinner Money** button.

WARNING Clicking the **Calculate From Dinner Money** button overwrites all existing data in the **School Dinner Taken** panel.

If SIMS detects missing information, the following message is displayed:

Dinner Money information is incomplete. Please ensure that meals are recorded in Dinner Money.

2. Click the **Cancel** button to return to SIMS where the missing information can be entered or the **OK** button to continue.

A tick is entered against each pupil who is receiving any type of meal provided by the school on census day. These meals have a meal type category of **School Provided**, with a description such as hot school meal or school sandwich.

3. Edit the information by clicking the required row, in the **School Dinner Taken** column, to toggle between a tick and blank (no meal taken), as required.

Using Attendance to Calculate School Dinners Taken on Census Day

The School Census Return only requires information about school meals provided by the school on census day. However, if SIMS Attendance is in use, the attendance data recorded for census day morning can be used to calculate all pupils who are present and are likely to be taking a school dinner.

The information calculated from attendance can be edited to so that school meals provided by the school only are collected in the return.

1. Click the **Calculate From Attendance** button.

WARNING Clicking the **Calculate From Attendance** button overwrites existing data in the **School Dinner Taken** panel.

If missing marks exist, a message is displayed:

Please ensure that registers have been taken. Missing marks have been interpreted as absent and no dinner taken.

- Click the **Cancel** button to return to SIMS where missing marks can be entered or the **OK** button to continue.

A tick is entered against each pupil who is marked as present on census day morning (i.e. AM session). It is possible that some of these pupils are not taking meals provided by the school, e.g. they go home for dinner or bring a packed lunch from home. Meals provided by the school only are required for the return.

Use the **Group By** functionality to group pupils by **Year Taught In, Reg Group** or **Enrolment Status**, enabling school dinners taken information to be updated from class lists, etc.

- Edit the information by clicking the required row, in the **School Dinner Taken** column, to toggle between a tick and blank (no meal taken), as required.

Using Manual Entry to Record School Dinners Taken on Census Day

If your school is not using SIMS Dinner Money or SIMS Attendance the number of school dinners taken on census day (i.e. meals provided by the school) can be entered manually.

- Click the **Tick All** button to populate the **School Dinner Taken** column. All pupils are ticked indicating that they received a school dinner on census day.
- Edit individual records by clicking the applicable **School Dinner Taken** cell to toggle between a tick and blank (no meal taken).

Z School Dinner Taken

Reference Date: 19/01/2023 All pupils including those eligible for FSM should be included below

☒ Group By Calculate From Attendance Calculate From Dinner Money

Surname	Forename	YTI	Reg Group	Enrol Status	School Dinner Taken
Abbott	Jessica	2	2JB	Single Registration	
Abhra	Shaqib	2	2JB	Single Registration	
Abrams	Paul	1	ELM	Single Registration	
Ackton	Charlotte	2	2GH	Single Registration	✓
Aditya	Zayan	R	PINE	Single Registration	✓
Ainsley	Charlotte	1	OAK	Single Registration	✓
Alala	Michael	2	2GH	Single Registration	
Alberts	Courtney	1	PINE	Single Registration	
Andrews	Ching	1	ELM	Single Registration	✓
Andrews	Izabel	R	ASH	Single Registration	✓
Armitage	Elise	R	OAK	Single Registration	✓
Atkins	Austin	R	PINE	Single Registration	✓
Atkins	Portia	1	ASH	Single Registration	
Barnes	Isaac	1	OAK	Single Registration	✓

Total Taken: 91 Total Not Taken: 87

Buttons: ☒ Tick All, ☐ Reset

The **Total Taken** and **Total Not Taken** (located at the bottom of the panel) provide an indication of whether the number of school dinners taken is correct or whether further edits are required.

- After the return has been created and validated, run the School Dinner Taken detail report and then check the report contents.
- Continue editing until school dinner taken details are correct.

WARNING Clicking the **Reset** button removes all existing ticks from the **School Dinner Taken** column.

Updating Time in Unit

Time in Unit, also referred to as Contact Time, is the total number of expected hours that a child spends at a Pupil Referral Unit in census week.

The Time in Unit must be recorded for all pupil/students who are on-roll on census day.

If time in unit has previously been recorded via **Tools | Statutory Return Tools | Update Time in Unit**, the values are displayed in the **Time in Unit** panel, otherwise the values default to zero.

Z Time in Unit Edit Recalculate

Name	Date of Birth	Sex	AdNo.	Year	Reg	Time in Unit
Abdelkoder, Mohamed	15/03/2012	Male	005955	8	8C	0
Abdullah, Tamwar	12/01/2009	Male	005566	11	11A	0
Abhra, Abjit	20/11/2009	Male	005625	10	10A	0
Abhra, Alisha	20/11/2009	Female	005626	10	10C	0
Abimbola, Deon	14/05/2008	Male	005306	12	G	0
Ackroyd, Marcus	21/08/2012	Male	005956	8	8D	0

The data displayed in the **Time in Unit** panel is read-only. However, values can be updated by clicking the **Edit** button to display the **Update Time in Unit** page where all pupil/students who are on-roll on census day are displayed.

Update Time in Unit Save Undo

Census
Term:

Pupils View
Year Group: Reg

Pupils

Name	Date of Birth	Sex	AdNo.	Year	Reg	Time in Unit
Aaron, Sophie	01/09/2005	Female	004989			0

- The following options can be used to sort and filter the display:
 - The options available in the **Pupils View** panel can be used to restrict the list of pupil/students displayed. **Year Group**, **Reg** group and the **Status** of the data displayed, e.g. **No Time in Unit**, can be selected.
 - The display can be sorted by **Name**, **Date of Birth**, **Sex**, admissions number (**AdNo.**), **Year** group taught in, and **Reg** group. Right-click the applicable column heading then select **Sort By** from the drop-down list. The list of pupil/students is then re-arranged into your chosen sort order.
- To specify the time in unit for an individual pupil/student, click the required pupil/student record to highlight it then click the associated cell in the **Time in Unit** column and enter the required value.

IMPORTANT The number of hours entered per pupil/student must be between 0.0 and 99. Whole hours only can be entered.

3. If most of the pupil/students are expected to be in the Pupil Referral Unit for the same number of hours in census week, the following method can be used to quickly populate the column:
 - a. In the **Pupils View** panel, select the required year group from the **Year Group** drop-down list. The selected pupil/students only are displayed in the **Pupils** panel.
 - b. Right-click the **Time in Unit** column header then select **Select All** from the drop-down list.
 - c. Click in one of the highlighted cells of the **Time in Unit** column then enter the number of hours that is applicable to the majority of pupil/students.
 - d. The number is entered automatically for all selected pupil/students.
 - e. Click to the right of the **Time in Unit** column to deselect all.
 - f. Edit the entry for each pupil/student whose hours are expected to be different. This is achieved by highlighting the required pupil/student, then clicking the associated **Time in Unit** cell and entering the required number.
4. When all entries/updates have been made, click the **Save** button.
5. Click the **OK** button (located bottom right-hand side of screen) to return to the **Census Return Details** page, where the updated time in unit hours are displayed.

Resetting Time in Unit Values

To reset all time in unit values, right-click the **Time in Unit** column header, then select **Reset All** from the drop-down list. All values are reset to zero.

Re-enter correct values as previously described, then click the **Save** button.

Identifying which Pupils have no Hours Specified

To ensure that all pupil/students have a time in unit entered against their record, select **No Time in Unit** from the **Status** drop-down list (located in the **View Pupils** panel). Any pupil/students without a time in unit value are displayed. Enter a time in unit value for these pupil/students, as previously described, then click the **Save** button.

Entering Attendance Information

Termly attendance data (including attendance codes and the number of sessions missed) should be provided for non-boarder pupil/students and leavers aged four to 15 inclusive, who were on-roll for at least one session during the collection period.

Initially the **Attendance** panel is blank. However, after clicking the **Calculate All Details** button (located in the **School Information** panel) the display changes.

IMPORTANT Clicking the **Calculate All Details** button overwrites any edited data, in every panel, with the original data stored in SIMS. Do not use this button if you wish to keep any changes you have made.

The information displayed in the **Attendance** panel (after the **Calculate All Details** button is clicked) is dependent on which of the following is applicable:

- SIMS Attendance/Lesson Monitor is in use, the attendance codes being used are DfE compliant and there are either:
 - no missing marks
 - or
 - missing marks.
- SIMS Attendance/Lesson Monitor is in use and the attendance codes being used are DfE non-compliant.
- SIMS Attendance/Lesson Monitor is not in use.

More Information:

Attendance Report on page 49

SIMS Attendance/Lesson Monitor Users

If SIMS Attendance/Lesson Monitor is in use, data is collected on all categories of school attendance. Ensure that all missing marks and unexplained absences for the previous term have been dealt with before commencing the return.

TIP After the Create and Validate process is run, the Attendance detail report can be used to assist with the checking of attendance data. Select **Attendance Report** from the **Detail Report** drop-down list.

Are your Attendance Codes DfE Compliant?

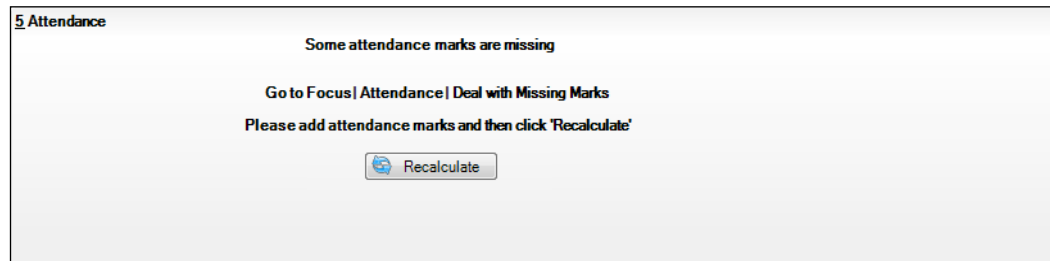
If Attendance/Lesson Monitor is in use and your school is using DfE compliant attendance codes, attendance data is entered directly into the return, providing that there are no missing marks.

If all attendance marks have been entered in Attendance/Lesson Monitor, the following message is displayed in the **Attendance** panel, informing you that your attendance codes are DfE compliant but will be rechecked at the Create and Validate stage.

5 Attendance

Your attendance codes are DfE compliant
This will be rechecked at the Create & Validate stage

However, if any missing attendance marks are detected, the following message is displayed in the **Attendance** panel, requesting that you add the missing attendance marks.



5 Attendance

Some attendance marks are missing

Go to Focus | Attendance | Deal with Missing Marks

Please add attendance marks and then click 'Recalculate'

Recalculate

1. Use the Deal with Missing Marks routine (**Focus | Attendance** (or **Lesson Monitor**) | **Deal with Missing Marks**) to locate the missing marks and enter appropriate attendance codes.
2. Return to the **Census Return Details** page and click the **Check missing marks** button in the **Attendance** panel to ensure that all missing marks have been dealt with.

NOTE The Create and Validate process can still be run even if some attendance marks are missing. You will be asked if you wish to continue to create the return or cancel the Create and Validate process.

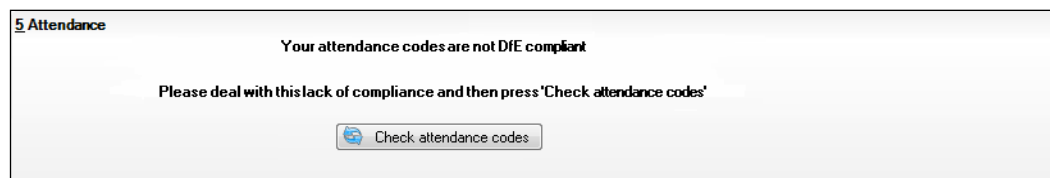


More Information:

Producing Detail Reports on page 48

Are your Attendance Codes DfE Non-Compliant?

If Attendance/Lesson Monitor is in use but one or more invalid attendance codes have been detected, a message is displayed in the **Attendance** panel to inform you that your attendance codes are not DfE compliant.



5 Attendance

Your attendance codes are not DfE compliant

Please deal with this lack of compliance and then press 'Check attendance codes'

Check attendance codes

1. Non-compliant codes must be dealt with. Please contact your Local Support Unit for assistance.
2. Click the **Check attendance codes** button to check that DfE attendance codes are now in use.

If the attendance codes are now DfE compliant, a message informs you that the codes will be rechecked at the **Create & Validate** stage.

3. Click the **OK** button to continue.

Entering Information about Teenage Mothers

The required information about teenage mothers should be recorded in the **Teenage Mothers** panel.

8 Teenage Mothers	
Unit caters for teenage mothers	<input checked="" type="checkbox"/>
Number of teenage mothers expected to attend in Census week	<input type="text" value="8"/>
Unit provides childcare facilities	<input checked="" type="checkbox"/>

1. If the **Unit caters for teenage mothers**, select the associated check box.
2. Enter the **Number of teenage mothers expected to attend in Census week**.
3. If the **Unit provides childcare facilities**, select the associated check box.

When this panel is complete and you are satisfied that all the details on the **Census Return Details** page are correct, the census return file can be created and validated.



More Information:

Generating Detail Reports on page 54

When this panel is complete and you are satisfied that all the details on the **Census Return Details** page are correct, the census return file can be created and validated (please see *Creating and Validating the School Census Return* on page 45).

04 | Completing the School Census Return

Creating and Validating the School Census Return.....	45
Producing Detail Reports	48
Printing a Report from your Web Browser	56
Deleting Temporary Web Browser Files	56
Producing the Summary Report	56
Editing an Unauthorised Return	57
Authorising the Return.....	58
Submitting the Return	60
Retrieving Authorised Census Return Files	60
Copying a Return	61
Deleting an Unauthorised Return	62

Creating and Validating the School Census Return

A return must be created, validated and authorised before it can be sent to your Local Authority or uploaded to the DfE COLLECT data collection website (as applicable to your school).

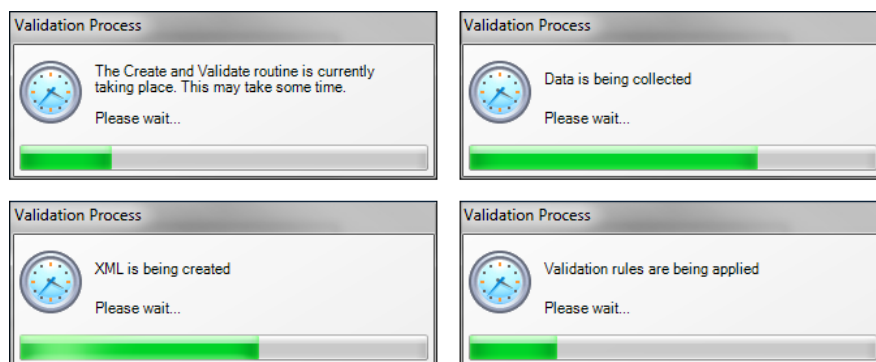
Validating the return creates an unauthorised return file, which is then run against a set of DfE rules. When the validation is complete, a list of errors and queries is displayed.

An error is caused by either missing or inaccurate data, whilst a query highlights data that is unusual or not as expected, e.g. there are no pupil/students showing as having special educational needs.

1. Select **Routines | Statutory Returns | School Census** to display the **Census Return** browser.
2. Click the **Search** button to display a list of returns.
3. Double-click the required return to display the **Census Return Details** page.
4. Click the **Create & Validate** button to start the process. There may be a short delay, depending on the number of pupil/students at your school.

04| Completing the School Census Return

A progress bar is displayed, indicating that the Create and Validate process is being performed.



During the Create and Validate process, SIMS examines the data for any anomalies applicable to your school phase, e.g. no top-up funding information, missing attendance marks, permanent exclusions without a final governor review result, etc.

If an anomaly is found, a message is displayed, which provides the opportunity to continue to create and validate or cancel the process, so that details can be checked. Detail reports are available to assist you when checking details.

When the validation process is complete, the **Validation Errors Summary** panel is displayed at the bottom of the screen.



Additional Resources:

Dealing with Missing Marks section in the *Edit Marks Routine* chapter of the [Managing Pupil/Student Attendance handbook](#) or the [Monitoring Session and Lesson Attendance handbook](#)

Recording Exclusion chapter of the [Managing Pupil/Students handbook](#).

Resolving Validation Errors and Checking Queries

After creating the return file and validating the data, any errors and queries found are listed in the **Validation Errors Summary** panel.

Validation Errors Summary			
Return Validated - 10 Validation rules failed (Errors - 4; Queries - 6)			
Student Search: ALL Total of displayed rows: 10 To resolve an error, click in row to navigate to the relevant screen			
Type	Sequence	Message	Location
F	1500	UPN missing	Name: Abraham, Janet Date of Birth: 2005-05-19, Female/UPN: # Go to Focus Student Student Details and add or issue a UPN.
F	1500	UPN missing	Name: Reid, Rosie Date of Birth: 2009-03-07, Female/UPN: # Go to Focus Student Student Details and add or issue a UPN.
F	1840	Pupils aged 5 and over Language missing or invalid.	Name: Henderson, Jacki Date of Birth: 2010-05-07, Male/UPN: K823299140 # Go to Focus Student Student Details Ethnic/Cultural panel and enter First language
F	2350	Insufficient Address information provided.	Name: Bains, Kinki Date of Birth: 2005-01-18, Male/UPN: H820200109012 # Go to Focus Student Student Details Addresses and edit pupil's address
Q	1601Q	Please Check: Pupil's age is out of range for school type.	Name: Sungail, Skaisiel Date of Birth: 2008-03-28, Female, Age: 12/UPN: BB # Go to Focus Student Student Details and enter pupil's date of birth.
Q	1620Q	Please check: duplicate pupil records with the same Surname, Forename, Gender and Date of birth.	Name: Bennison, Hugo Date of Birth: 2013-02-03, Male/UPN: # Go to Focus Student Student Details and check for duplicate pupil record.
Q	1620Q	Please check: duplicate pupil records with the same Surname, Forename, Gender and Date of birth.	Name: Bennison, Hugo Date of Birth: 2010-02-03, Male/UPN: V8232991400 # Go to Focus Student Student Details and check for duplicate pupil record.
Q	2350Q	Please check: Pupil record with no address details.	Name: Rollins, Celia Date of Birth: 2013-09-14, Female/UPN: C823299140 # Go to Focus Student Student Details Addresses and edit pupil's address

The **Validation Errors Summary** panel header displays the number of errors and queries found when the Create and Validate routine was run. A pupil/student and error search facility is also available.

The following information is provided to help with the resolution of validation failures:

- **Type** - the type of validation rule.
 - Failure (**F** displayed in red) indicates an error that must be resolved.

- Query (**Q** displayed in black) indicates that there are unusual data conditions. These should be considered and corrected, if necessary.
- **Sequence** - the validation error or query number.
- **Message** - the validation error or query message text.
- **Location** - the specific record in SIMS that contains the error or query.
- **Solution** - the SIMS menu route and/or instructions about where/how the error can be corrected or the query checked.

TIP Using the Solution hyperlinks

When the pointer is hovered over an error or query row, it changes to a hand if a hyperlink is available to the area of SIMS where the problem can be checked.

A hyperlink is also indicated by a hash symbol (#) preceding the **Solution** text.

Click the required hyperlink to display the specific area in SIMS where the record(s) can be checked/corrected.

To assist in the viewing of errors and queries:

- When the mouse pointer is hovered over a **Message**, **Location** or **Solution**, hover help displays the entire content of that cell.
- The Student Search functionality can be used to display all errors and queries relating to a particular pupil/student.
 - a. Enter all or part of a UPN, pupil/student's surname or date of birth in the **Student Search** field.
 - b. Select the required record from the **Student Search** drop-down list to populate the **Student Search** field.
 - c. Click the **Find** button to display the applicable validation records.
- Use the **Errors Search** to display the required error or query you want to view. Select **ALL**, **ERRORS**, **QUERIES** or the required number from the drop-down list. The total number of rows that relate to the selected validation is displayed adjacent to the **Error Search** field.
- By default, when **ALL** is selected from the **Errors Search** drop-down list, the errors are displayed at the top of the list.
 The order of the items in the list can be changed by clicking the appropriate column heading.
 The width of the columns can be changed by dragging the dividing line between the column headings until the required size is achieved.
- View a summary of validation failures by clicking the **Report** button (located above the **Validation Errors Summary** panel, on the left-hand side). The report is displayed in your web browser, from where it can be printed or transferred to another application, if required.

The report is saved automatically in the **Census Folder** (specified previously via the census browser). The original report, which was generated when the **Create & Validate** button was clicked is also stored in this folder.

- Your generated report file name: Validation Errors Summary.HTML
- Original report file name:
<LACode><SchoolNumber>_<SurveyType>_<LACode><LL><Year>
_<SerialNumber>_ValidationErrorsSummary.HTML

For guidance on navigating to files on your local workstation when you are working in a Hosted environment, please contact your System Manager or Local Support Unit.

Resolve as many errors and check as many queries as possible then revalidate the return details. Continue to resolve failures and revalidate the return as many times as necessary.

NOTE All errors must be resolved, and all queries must be investigated.

If at any point you want to hide the list of error and queries, click the **Close** button located at the top right-hand side of the **Validation Errors Summary** panel. The list is displayed again when the Create and Validate process is run.

Many of the errors generated can be fixed quickly using bulk update functionality (via **Routines | Pupil (or Student) | Bulk Update**). For more information, please refer to the [Managing Pupil/Students handbook](#).

Producing Detail Reports

Detail reports can be used to check the data stored in SIMS that has been used to create the return. The reports can be produced as soon as the return has been created and validated.

Each detail report header displays the **Security Message** that was defined in the **Census Return** browser, the **Report Criteria** and the **Total Pupil (or Student)s** who are listed in the report. Also included in the report header is the **School Name**, the **Fileset Number**, the **Filename**, the **Report Created** date, and the **XML Version**.

Where a pupil/student's National Curriculum Year group is different from what their date of birth would suggest, the applicable **YTI** cell is highlighted in yellow.

The reports available for selection may vary depending on your school phase.

On-Roll Basic Details Report

Report Criteria: Pupil/students on-roll on census day.

This report provides basic information about the pupil/students: UPN, ULN, legal surname, legal forename, preferred surname, former surname, date of birth (DOB), sex, year taught in (YTI), date of admission (DOA), enrolment status, ethnicity, language, Youth Support Services Agreement indicator (YSSA), part-time status, boarder, time in unit, young carer identified by (parent/guardian, school or not declared).

Leavers Basic Details Report

Report Criteria: Pupil/students not on roll on census day:

- leavers with attendance
- Leavers with exclusions
- Leavers with learner support of Vulnerable Group Bursary Awarded or Discretionary Bursary Awarded
- Leavers with funding and monitoring
- Leavers with alternative provision from.

This report provides basic information about leavers: UPN, ULN, former UPN, legal surname, legal forename, middle names, former surname, date of birth (DOB), sex, date of admission (DOA), date of leaving (DOL), ethnicity, language, part-time status, boarder, attendance, exclusion and Learner Support.

Exclusions Report

Report Criteria: Pupil/students with exclusions:

- On-roll pupil/students and leavers
- Suspensions (excluding lunchtime suspensions)
- Permanent Exclusions with final review.

NOTE Permanent exclusions are collected only if a final review exists.

The following details about pupil/students who match the report criteria are displayed: UPN, legal surname, legal forename, date of birth (DOB), sex, date of admission (DOA), date of leaving (DOL), exclusion category, reason(s) for exclusion, exclusions start date, number of sessions from which the pupil/student was excluded, SEN provision and on-roll status.

NOTE Suspension is the new name for a Fixed Term Exclusion.

Attendance Report

Report Criteria: Pupil/students with attendance one term ago.

NOTE On-roll and leavers (but not boarders) who were aged four to 15.

The Attendance report provides basic pupil/student information about the pupil/students who match the report criteria, i.e. UPN, legal surname, legal forename, date of birth (DOB), sex, date of admission (DOA) and year taught in (YTI).

The attendance information included in the report is dependent on whether Attendance/Lesson Monitor is in use.

- Attendance/Lesson Monitor in Use:
 - termly sessions possible
 - on-roll status
 - present codes
 - approved education activity codes
 - attendance codes (divided into authorised and unauthorised sessions)
 - attendance not required codes.

Absentees Report

Report Criteria: On-roll pupil/students and leavers (but not boarders) who have an absence rate of 10% or above, with attendance one term ago, who were aged four to 15.

An individual pupil/student's overall absence rate is calculated as follows:

$$\text{Overall absence rate} = \frac{\text{Total overall absence sessions}}{\text{Total sessions possible}} \times 100$$

The report provides the following information about the pupil/students who match the report criteria: UPN, legal surname, legal forename, date of birth (DOB), sex, year taught in (YTI), number of sessions possible, session absence (i.e. the number of authorised plus unauthorised absences), on-roll status and enrolment status.

This report can assist with the tracking of absence (particularly persistent absence) and highlights those absences that might need to be tracked.

SEN Report

Report Criteria: On-roll pupil/student with SEN Provision/Status **E** (Education, Health and Care Plan) or **K** (SEN Support).

This report provides a list of pupil/students who have special educational needs. Displayed are their UPN, legal surname, legal forename, date of birth (DOB), sex, year taught in (YTI), SEN provision, SEN type ranking, SEN type and on-roll status.

Address Details Report

Report Criteria: Pupil/students on-roll on census day.

This report provides a list of pupil/students, their UPN, former UPN, legal surname, legal forename, middle name(s), post code, unique property reference number (UPRN), address details and the administrative area/county.

Definition: Unique Property Reference Number (UPRN) is a unique identifier (reference number) that links together related address records across different software programmes. This enables organisations to collate and share information based on a common reference number.

School Dinner Taken Report

Applicable to schools with pupils in Reception, Year 1 and Year 2

Report Criteria: Pupil/students on-roll on census day, who have taken school dinner on the reference date.

- Pupil/students in Year Taught In R, 1 and 2.
- Pupil/students in Year Taught In X who are aged four to six (**Special schools only**).

The report header also displays the total number of pupil/students, the total number of school dinners taken and the total number of school dinners not taken.

This report provides the following information about pupil/students who match the report criteria: UPN, legal surname, legal forename, date of birth (DOB), sex, year taught in (YTI) and school dinner taken (yes/no).

Free School Meal Eligibility Report

Report Criteria: On-roll pupil/students on census day who were eligible for free school meals up to census day.

This report provides information on free school meal eligibility for pupil/students who match the report criteria: UPN, legal surname, legal forename, date of birth (DOB), sex, year taught in (YTI), free school meal eligibility start date, end date and the UK country in which the eligibility applies, and on-roll status.

NOTES This report includes any free school meals recorded outside of England, e.g. Wales.

Only Free School Meals records where the country recorded is England or <blank> attract the Pupil Premium.

Learner Support Report

Report Criteria: On-roll pupil/students and leavers aged 16 plus who have been awarded Vulnerable Group and/or Discretionary Bursary funding.

This report provides information about the applicable pupil/students: UPN, legal surname, legal forename, date of birth (DOB), sex, year taught in (YTI), learner support and on-roll status.

Top-up Funding Report

Report Criteria: On-roll pupil/students who have been awarded Top-up Funding as at census day.

The report provides the following information: UPN, legal surname, legal forename, date of birth (DOB), sex, year taught in (YTI) and SEN provision.

Funding and Monitoring Report

Not applicable to Nursery schools

Report Criteria: On-roll pupil/students and leavers with funding and monitoring information for the collection period.

The report provides the following pupil/student details, and funding and monitoring information: UPN, legal surname, legal forename, date of birth (DOB), sex, Year Taught In (YTI), enrolment status, date of leaving (DOL), funding and monitoring (FAM) type, e.g. NLM (National Learning and Monitoring), funding and monitoring (FAM) code, description, on-roll status.

Funding and Monitoring key to codes:

01 = Pupil/student in receipt of school funded tutoring

22 = Pupil/student is repeating up to one year of 16 to 19 funded provision.

The code(s) displayed in the report vary depending on your school phase.



Additional Resources:

Preparing for the School Census Spring Return guide

Early Years Report

Applicable to schools with Early Years children only

Report Criteria: Pupils with early years data who are on-roll on census day.

DAF is now collected for children from 9 months old (9 mth, 1, 2,3,4) **UPDATE**

- All 9-month to 1-year-olds **UPDATE**
- All 2-year-olds
- All 3-year-olds
- All 4-year-olds born with Year Taught In E1, E2, N1 and N2.

The report displays the following information: UPN, legal surname, legal forename, date of birth (DOB), sex, year taught in (YTI), hours at setting, funded hours, eligibility code, extended funded hours, expanded funded hours and disability access fund.

EYPPR Report

Applicable to schools with Early Years children only

Report Criteria: Pupil/students on-roll on census day.

The **EYPPR grid** has been added and includes children from 9 months old (9 mth,1, 2,3,4) **UPDATE**

- All 9-month to 1-year-olds **UPDATE**
- All 2-year-olds
- All 3-year-olds
- 4-year-olds (in E1, E2, N1 and N2 only).

The Early Years Pupil Premium Receipt (EYPPR) report provides a list of all pupil/students, their UPN, legal surname, legal forename, preferred surname, former surname, date of birth (DOB), sex, year taught in (YTI), post looked after arrangements, hours at setting, funded hours and their basis for EYPP eligibility (e.g. receipt-economic, receipt-other, receipt-economic and other, receipt-unknown or not eligible).

2 Year Old Basis for Funding Report

Applicable to schools with Early Years children only

Report Criteria: Pupils on-roll on census day having two-year-old basis for funding data.

The report displays the following information: UPN, legal surname, legal forename, date of birth (DOB), sex, year taught in (YTI), hours at setting, funded hours, economic criteria, high level SEN or disability and looked after or adopted from care status.

Post Looked After Arrangements Report

Report Criteria: On-roll pupil/students who have post looked after arrangements as at census day.

The report provides the following information about pupil/students who have post looked after arrangements: UPN, legal surname, legal forename, date of birth (DOB), sex, year taught in (YTI) and post looked after arrangements, e.g. ceased to be looked after through adoption.

General Report

Where applicable, the General report provides information about:

- childcare provisions during the academic year.
This section of the report displays the following information: childcare type, on site, signposted, opening time, closing time, number of childcare places, provider, other schools and weeks open.
- teenage mothers:
 - unit caters for teenage mothers
 - number of teenage mothers expected.

Alternative Provision Report

Report Criteria: School Arranged Alternative Provision Placements that fall within the Alternative Provision Placement data collection period:

- On-roll
- Leavers.

School Arranged Alternative Provision Placements

The first table in the report provides the following information: UPN, legal surname, legal forename, date of birth (DOB), sex, Year Taught In (YTI), alternative provision URN, alternative provision UKPRN, alternative provision setting, companies house number, alternative provision postcode, alternative provision reason, start date, SEN on start date, end date, SEN on end date, alternative provision attendance, alternative provision sessions and on-roll status.

Alternative Provision

The second table in the report provides the following information: UPN, legal surname, legal forename, date of birth (DOB), sex, Year Taught In (YTI), previous URN, alternative provision admission reason, SEN on start date and on-roll status.

Teenage Mothers Report

Report Criteria: The number of teenage mothers expected to attend the Pupil Referral Unit in the week that the census takes place.

This report displays the following information:

- Whether the unit caters for teenage mothers.
- The number of teenage mothers expected to attend the unit in census week.
- Whether the unit provides childcare facilities.

The report data is taken from the information entered in the **Teenage Mothers** panel on the **Census Return Details** page.



More Information:

Entering Information about Teenage Mothers on page 44

Permanent Exclusions without Final Review Report

Not applicable to Nursery schools

Report Criteria: On-roll pupil/students and leavers with permanent exclusions and without a final review.

NOTE The date range for this report does not match the collection dates for the school census. This is intentional to enable all instances of permanent exclusions without final review to be checked.

This report details permanent exclusions that do not have a final review and will not be included in the census, either because the exclusion process is still ongoing or because the school has not recorded the final review result. The report has been provided to assist schools in checking whether details have been recorded accurately.

The following information is included in the report: UPN, legal surname, legal forename, date of birth (DOB), sex, date of admission (DOA), date of leaving (DOL), reason for exclusion, exclusion start date, SEN expert requested (Yes/No) and on-roll status.

Generating Detail Reports

Selecting a Single Detail Report

To select a single detail report, select the required report from the **Detail Report** drop-down list located at the top of the **Census Return Details** page. The selected report is generated automatically.

NOTE The contents of the graphics are examples only of what you might expect to see when using SIMS to produce the School Census Return.

Census Return Details - Spring 2023 Term : School Census Spring 2023

Save Undo Create & Validate Summary Authorise Detail Report

1 Census Details 2 Selected Period on Census Day 3 School Information

1 Census Details

Census Date: 19/01/2023

Description: School Census Spring 2023

Attendance collected from: 01/09/2022

Exclusions collected from: 18/04/2022

AP Placements collected from: 06/10/2022

FAM collected from: 01/08/2022

Learner Support collected from: 01/08/2022

*FSM collected from: 07/10/2022

*Only collected for on roll pupils not leavers

2 School Information

School Name: Green Abbey School

LA: 823 Establishment

Telephone: 851234

School E-mail Address: office@ga.org.uk

School Phase: PR Pupil Referral Unit (PRU)

On Roll Basic Details Report

Leavers Basic Details Report

Exclusions Report

Attendance Report

Absentees Report

SEN Report

Address Details Report

School Dinner Taken Report

Free School Meal Eligibility Report

Learner Support Report

Top-up Funding Report

Funding and Monitoring Report

Early Years Report

EYPPR Report

Post Looked After Arrangements Report

General Report

Alternative Provision Report

Teenage Mothers Report

Permanent Exclusions without Final Review Report

Multiple Reports...

Selecting Multiple Detail Reports

1. Select **Multiple reports** from the bottom of the **Detail Report** drop-down list to display the **Detail Reports** dialog. By default, all detail reports are selected.

The reports that are available may vary according to your school phase.

Detail Reports

☒ On Roll Basic Details Report

☒ Leavers Basic Details Report

☒ Exclusions Report

☒ Attendance Report

☒ Absentees Report

☒ SEN Report

☒ Address Details Report

☒ School Dinner Taken Report

☒ Free School Meal Eligibility Report

☒ Learner Support Report

☒ Top-up Funding Report

☒ Funding and Monitoring Report

☒ Early Years Report

☒ EYPPR Report

☒ Post Looked After Arrangements Report

☒ General Report

☒ Alternative Provision Report

☒ Teenage Mothers Report

☒ Permanent Exclusions without Final Review Report

Report Cancel

2. If any reports are not required, deselect the associated check box.

3. Click the **Report** button to generate the selected report(s).
4. The report(s) are displayed in your web browser, from where the data can be transferred to a spreadsheet, if required.

The report(s) are saved automatically in the **Census Folder**, which was specified in the **Census Return for Spring Term** browser, e.g. C:\SCHOOL CENSUS.

The report is saved with a filename that consists of the following data fields separated by underscores ('_'):

```
<LACode><SchoolNumber>_<SurveyType>_<LACode><LL><Year>_<SerialNumber>_<name of the report>_.html
```

For example:

```
8234321_SC1_823LL26_001_onroll_pupil_basic_details_report.html.
```



More Information:

Configuring the Census Folder on page 13

Printing a Report from your Web Browser

IMPORTANT Any printed reports containing information that could identify a person (e.g. their name, address, UPN, etc.) should be used for validation purposes only and should not be retained. The Security Message (displayed at the top of each report) can be customised to include, for example, instructions for the destruction of the printed reports.

1. With the generated report displayed in your web browser, select the **Print** option (**Ctrl+P**) to display the **Print** dialog.
2. Ensure that the print settings are correct then click the **Print** button.
3. Click the **Close** button on the top right-hand corner of the web page to close the report and return to the census page.

Deleting Temporary Web Browser Files

It is recommended that, after viewing statutory returns reports, you delete any temporary web browser files to ensure that any cached data (i.e. data stored on your machine, which enables high-speed access to previously viewed data) is removed.

This prevents the information, e.g. copies of web pages that are stored in the local cache for faster viewing, remaining on the hard disk of the device in the temporary directory, where it is not secure.

When this process is performed, all temporary files (including any Statutory Returns reports files) that the browser has cached are deleted.

To clear the cache, open your web browser, then clear the browsing data history. For more information, please refer to the documentation applicable to the web browser you are using.

Producing the Summary Report

The Summary report enables the school staff, who are involved in the return's preparation, to assess the accuracy and completeness of the return data. It should then be passed to the Head Teacher for their review.

NOTE When the return is authorised, the Summary report is automatically generated and displayed in your web browser.

Generating the Summary Report

Click the **Summary** button, located at the top of the **Census Return Details** page, to display the report in your default web browser.

The report is saved automatically in the **Census Folder**, which was specified in the **Census Return** browser, e.g. C:\SCHOOL CENSUS.

The report is saved with a filename that consists of the following data fields separated by underscores ('_'):

```
<LACode><SchoolNumber>_<SurveyType>_<LACode><LL><Year>_<SerialNumber>_<name of the report>_.html
```

For example: 8234321_SC1_823LL26_001_Summary_Report.html.

It is important that the Head Teacher checks all the information on the Summary report before the return is authorised. Your LA might request that a copy of the Summary report is signed by the Head Teacher and sent to the LA when the return has been authorised.



More Information:

Configuring the Census Folder on page 13

Generating Detail Reports on page 54

Authorising the Return on page 58

Deleting an Unauthorised Return on page 62

Editing an Unauthorised Return

The return details, e.g. **Description**, **School Information**, etc. can be edited via the **Census Return Details** page at any time prior to authorisation.

IMPORTANT An authorised return cannot be edited. If changes are required to an authorised return, use the **Copy** facility to produce a duplicate return (with a unique description) in which the changes can be made.

1. Select **Routines | Statutory Returns | School Census** to display the browser.
2. Ensure that the **Census Folder** and the **Security message for Reports** are correct, then click the **Search** button to display any previously created returns. Unauthorised return files can be recognised by their .UNA suffix.
3. Double-click the required return. Alternatively, highlight the required return, then click the **Open** button to display the **Census Return Details** page.
4. Edit the return details as required.
5. Click the **Create & Validate** button to display the **Validation Errors Summary** panel.
6. Run the detail reports and Summary report and then use the information they provide to assist with resolving errors and queries.
7. Repeat the editing and Create & Validate process again, if necessary.

8. Click the **Save** button.



More Information:

Configuring the Census Folder on page 13

Specifying the Security Message for Reports on page 14

Resolving Validation Errors and Checking Queries on page 46

Producing Detail Reports on page 48

Producing the Summary Report on page 56

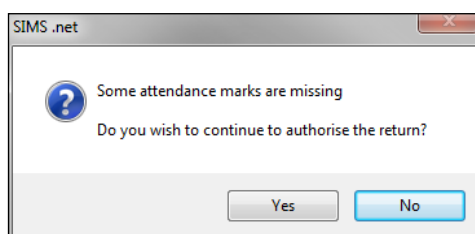
Authorising the Return

A return must be authorised before it can be submitted to your Local Authority or uploaded to the DfE COLLECT data collection website (as applicable to your school). If you authorise a return and subsequently need to make amendments, you must either make a copy of the return and work on the copy or create a new return.

Before authorising the return, you should ensure that all the information displayed on the **Census Return Details** page is correct and does not require further editing. This is because it is not possible to edit details after the return is authorised. The content of the Summary report can be useful when reviewing the information.

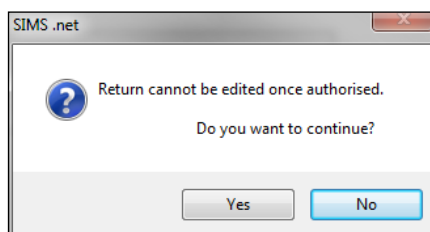
1. Click the **Authorise** button.

If missing marks exist, the following message is displayed.



2. Click the **Yes** button to continue with the authorisation process or the **No** button if you want to return to SIMS where the missing marks can be entered.

If you choose to continue, a message reminds you that the return cannot be edited once it is authorised.



3. Click the **Yes** button to continue or the **No** button to return to SIMS where edits can be made to the data before authorising.

If you choose to continue, the **Head teacher authorisation** dialog is displayed.

4. Enter any additional text to be displayed on the authorisation report, if required. This may be requested by your LA, e.g. to explain the reason for any validation failures.
5. Select the confirmation check box to confirm that the Head Teacher is satisfied that the Summary and/or detail reports have been checked and that the return file is ready for upload to your LA/DfE.
When the confirmation check box is selected, the **Continue** button is activated enabling you to complete the authorisation process.
6. Click the **Continue** button to authorise the return and prompt the following actions:
 - The return file extension changes automatically from UNA (unauthorised) to XML (authorised).
 - The Summary report, Authorisation report and Validation Errors Summary report are generated automatically and displayed in your web browser, from where they can be printed, if required.

All reports (including detail reports) and the XML file are saved in the **Census Folder**, which was specified previously in the **Census Return for [Term] [Year]** browser.

These reports can be viewed using the Retrieve Authorised Census Return Files routine (via **Tools | Statutory Return Tools**). This routine also provides the opportunity to download the files to a different folder.

IMPORTANT The retrieved files contain sensitive information. Ensure that authorised personnel only have access to the download folder.

For guidance on navigating to files on your local workstation when you are working in a Hosted environment, please contact your System Manager or Local Support Unit.

After the return is authorised, reports based on cohorts can be created (via **Reports | Design Reports**), so that items collected in the return can be tracked. Provided that **Student** has been selected as the data area, the Statutory Returns sub-report is available for selection when specifying the fields to be included in the report (the last node).



Additional Resources:

[Designing and Running Reports handbook](#)



More Information:

Producing the Summary Report on page 56

Retrieving Authorised Census Return Files on page 60

Copying a Return on page 61

Submitting the Return

When the return has been completed and the Summary report has been signed by the Head Teacher (if requested to do so by your LA), the .XML file can be uploaded to the DfE COLLECT data collection website or sent to your LA, depending on the instructions you have been given.

Guidance about how Local Authorities, schools and academies should submit the census data is available on the [GOV.UK website](#).

The authorised return file can be located in the folder previously specified in the **Census Return** browser. For guidance on navigating to files on your local workstation when you are working in a **Hosted** environment, please contact your System Manager or Local Support Unit.

IMPORTANT An authorised file cannot be edited. If you need to make changes to an authorised file, you must make a copy of the original file, rename it and work on the copy.

Retrieving Authorised Census Return Files

Authorised returns are stored in your Document Management Server (DMS). The Returns Manager can download and run the reports associated with previous authorised returns enabling the data for the current return to be compared with that submitted previously.

1. Select **Tools | Statutory Returns Tools | Retrieve Authorised Census Return Files** to display the **Retrieve Authorised Census Return Files for <census name>** page.
2. Select the type of census required from the **Return Type** drop-down list to display a list of previous returns that match the selected criteria.
3. By default, the **Download to** field displays the folder specified previously in the **Census Return** browser. To specify a different folder:
 - a. Click the **Select a folder** button (...) to display the **Browse For Folder** dialog. Navigate to the location of the required folder then highlight it. If a suitable folder does not exist, click the **Make New Folder** button then enter a suitable folder name.

IMPORTANT Ensure that authorised personnel only have access to the download folder because the retrieved files contain sensitive information.

For guidance on navigating to files on your local workstation when you are working in a Hosted environment, please contact your System Manager or Local Support Unit.

- b. Click the **OK** button to select or create the folder and then return to the **Retrieve Authorised Return Files for <census name>** page, where the chosen folder name is displayed in the **Download to** field.
4. Highlight the return you wish to retrieve then click the **Retrieve Files** button.

The authorised return file (i.e. the XML file) and all reports associated with the selected return are downloaded from your DMS to the specified folder. The folder and its contents are then displayed automatically, enabling you to open the required files in your web browser.

5. The contents of the specified folder can be viewed again by clicking the **Folder** button adjacent to the **Download to** field.

If you want to create reports based on cohorts, so that items collected in the return can be tracked, a sub-report is available (via **Reports | Design Reports**).

The **Statutory Returns** sub-report is available for selection only if **Student** has been selected as the Data Area.

When you **Select fields to be included in the report**, the **Statutory Returns** sub-report is located at the bottom of the list (the last node). Three options are available for selection under this sub-report: **Authorised Date**, **File Name** and **Return Description**.



Additional Resources:

[Designing and Running Reports handbook](#)

Copying a Return

An unauthorised return can be copied and saved as a new return. This enables a 'snapshot' of a return to be taken at any time providing a backup of any manual changes that have been made to the return, for example before recalculating details.

This functionality can also be used to make a copy of an authorised return if the LA or DfE requires it to be resubmitted. The necessary corrections can then be made to the data. The copied return must be saved, created, validated and authorised before resubmitting.

NOTE Ensure that the return you wish to replicate is not open at the time of copying.

1. Select **Routines | Statutory Returns | School Census** to display the census browser.
2. Click the **Search** button to ensure that the list of returns is displayed.
3. Highlight the file you want to copy then click the **Copy** button.

A message prompts for confirmation that you wish to make a copy of the selected return.

IMPORTANT Any values for Early Years, Top-up Funding, Post Looked After Arrangements, Funding and Monitoring, and Attendance (where applicable), will not be copied but will be populated from the current values held in the database.

The Create & Validate routine must be run to generate a new census file.

4. Click the **Yes** button to make the copy, which is then displayed in the browser as:
Copy of <description of selected file>.
5. To rename the copied return, highlight it, then click the **Open** button to display the **Census Return Details** page.
6. In the **Census Details** panel, edit the **Description** then click the **Save** button.

IMPORTANT A unique description must be used for each return. If duplicate returns are detected, an error message is displayed.

Deleting an Unauthorised Return

During the return process, several copies of the return might be created, e.g. to track progress. When the return has been authorised successfully, it is advisable to delete any versions of the return that are no longer required. This keeps the number of files in the storage folder and listed in the browser to a minimum, therefore removing confusion and lessening the risk of selecting the incorrect return.

The Delete routine can be used to remove unwanted returns at any time prior to the relevant return being authorised.

IMPORTANT When a return file is deleted, any associated files, e.g. Validation Errors Summary, detail reports, etc. that have been produced are also deleted.

Any return files that have already been authorised cannot be deleted.

1. Select **Routines | Statutory Returns | School Census** to display the browser.
2. Click the **Search** button to ensure that the list of return files is displayed.
3. Highlight the return file to be deleted, then click the **Delete** button. A message prompts for confirmation that the selected return should be deleted.
4. Click the **Yes** button to permanently delete the selected return file and all associated report files.

The selected return file and associated reports are removed from the browser and the storage folder.

Index

3

30 hour code 22, 24

A

absentees report 50

academies 17

access rights 5

address details report 50

attendance information

checking/editing 41

compliant codes 42

non-compliant codes 43

school dinner taken on census day . 36, 38

SIMS Attendance not in use 39

authorising 58

retrieving previous authorised census
returns 60

school census 58

C

calculating all details 15

census details

checking dates 14

editing description 14

childcare 18

updating 18

configuring

school census defaults 13

copying

school census return 61

creating & validating 45

D

data collected

school level 6

pupil/student level 7

default folder

defining 14

deleting

school census return 62

temporary web browser files 56

detail reports

producing 48

DfE compliant codes 42

DfE non-compliant codes 43

dinner money

school dinner taken on census day . 36, 37

disability access fund 22, 24

E

early years

2 year old basis for funding 24

30 hour code 24

disability access fund 24

extended funded hours 24

funded hours 24

hours at setting 24

pupil premium 24

early years data

30 hour code 22

disability access fund 22

extended funded hours 22

funded hours 22

hours at setting 22

pupil premium (EYPP) 22

report 52

updating 22

editing

an unauthorised return 57

attendance information 41

early years 22

post looked after arrangements 31

school information 16

entering

attendance information 41

errors and queries (validation)

resolving 46

exclusions report 49

extended funded hours 22, 24

F

free school meals	
eligibility report	51
funded hours	24
no hours recorded.....	27
updating	22
funding and monitoring	11, 34, 52

H

hours at setting.....	24
no hours recorded.....	27
updating	22

I

in care status	22
----------------------	----

L

learner support report	51
------------------------------	----

P

permissions	5
post looked after arrangements	
editing.....	31
report.....	53
preparation	
checking data.....	6
minimum version of SIMS	6
permissions	5
previous authorised census returns.....	60
printing	
reports	56, 60
validation errors summary	46
pupil premium eligibility/receipt	22
pupil/student reconciliation	
universal infant school meal	36

Q

queries and errors (validation)	
resolving	46

R

reporting	
-----------	--

deleting temporary web browser files ..	56
designing reports	60
producing detail reports	48
absentees report.....	50
address details report.....	50
attendance report	49
exclusions report	49
free school meal eligibility report	51
general report	53
generating detail reports	54
learners support report	51
leavers basic details report.....	49
post looked after arrangements	
report	53
reporting - funding and monitoring	
report	52
school dinner taken report	51
SEN report	50
teenage mothers report	54
top-up funding report	51
specifying security message	14
resolving	
errors and queries	46
retrieving	
authorised census return files.....	60
return	
permissions.....	5

S

school census return	
authorising.....	58
configuring the storage folder.....	13
copying	61
deleting	62
new	11
school dinner taken on census day.....	36
school dinner taken report	51
school information	
checking	6, 16
security	
deleting temporary files	56
specifying security message	14

SEN report..... 50

SIMS

version required to create return 6

steps to producing the return

flowchart 2

submitting the return 60

summary report

printing 56

producing 56

T

temporary web browser files

deleting 56

top up funding

top-up funding report..... 51

updating..... 29, 51

U

unauthorised return

copying 61

deleting 62

editing..... 57

updating

early years data 22

post looked after arrangements 31

top-up funding 29

V

validation failures

resolving 46