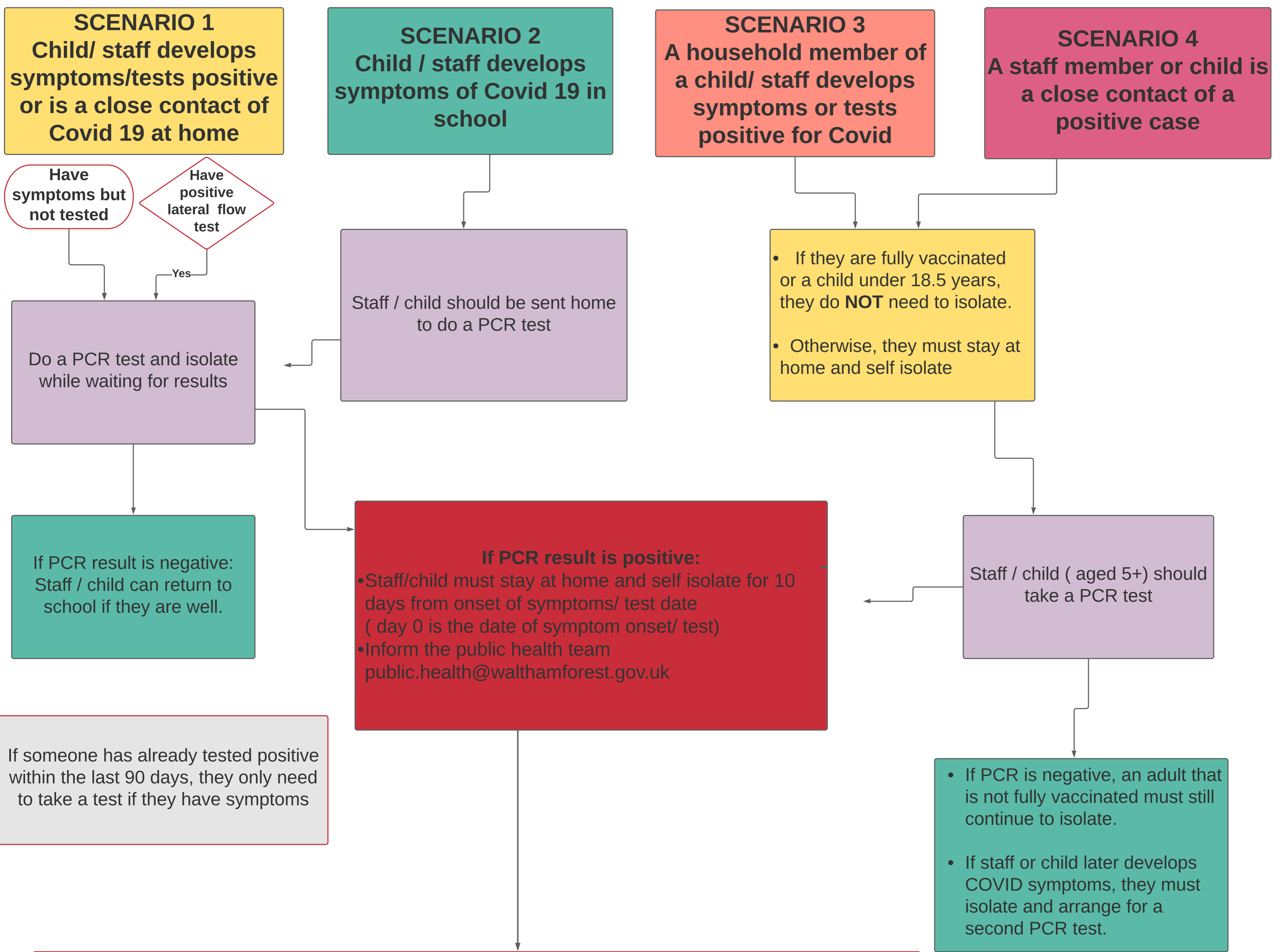




Waltham Forest

Process flow chart : Suspected or Confirmed cases of Covid 19 in schools and early years -Updated September 2021



If someone has already tested positive within the last 90 days, they only need to take a test if they have symptoms

ACTIONS TO BE TAKEN FOLLOWING A POSITIVE PCR

- Schools should send warn and inform letters to parents informing of positive case
- Schools should identify staff that have been in contact with case
- Enhanced cleaning in line with existing guidance
- Reinforce messaging around twice weekly lateral flow testing
- Inform public health team of Waltham forest (public.health@walthamforest.gov.uk)

Threshold for further action

- Five children or staff who are likely to have mixed closely, tests positive for Covid 19 within a 10 day period. OR 10% children or staff who are likely to have mixed closely, tests positive for covid 19 within a 10 day period.
- For special schools and residential settings, two children/ staff who are likely to have mixed closely that tests positive for Covid 19 within a 10 day period.
- Contact public.health@walthamforest.gov.uk and LCRC@phe.gov.uk stating the threshold has been met.

Children aged under 5 years old who are identified as close contacts will **ONLY** be advised to take a PCR test if the positive case is in their household