



# Culture Change for VAWG Inclusion

Education is  
fundamental to human  
development and  
active citizenship

Gender based violence  
negatively impacts  
educational outcomes,  
mental health and  
healthy development



# Violence Against Women and Girls includes:

- Domestic violence and abuse
- Female Genital Mutilation
- Forced marriage
- 'Honour' based violence
- Prostitution
- Trafficking
- Sexual violence, including rape
- Child sexual exploitation



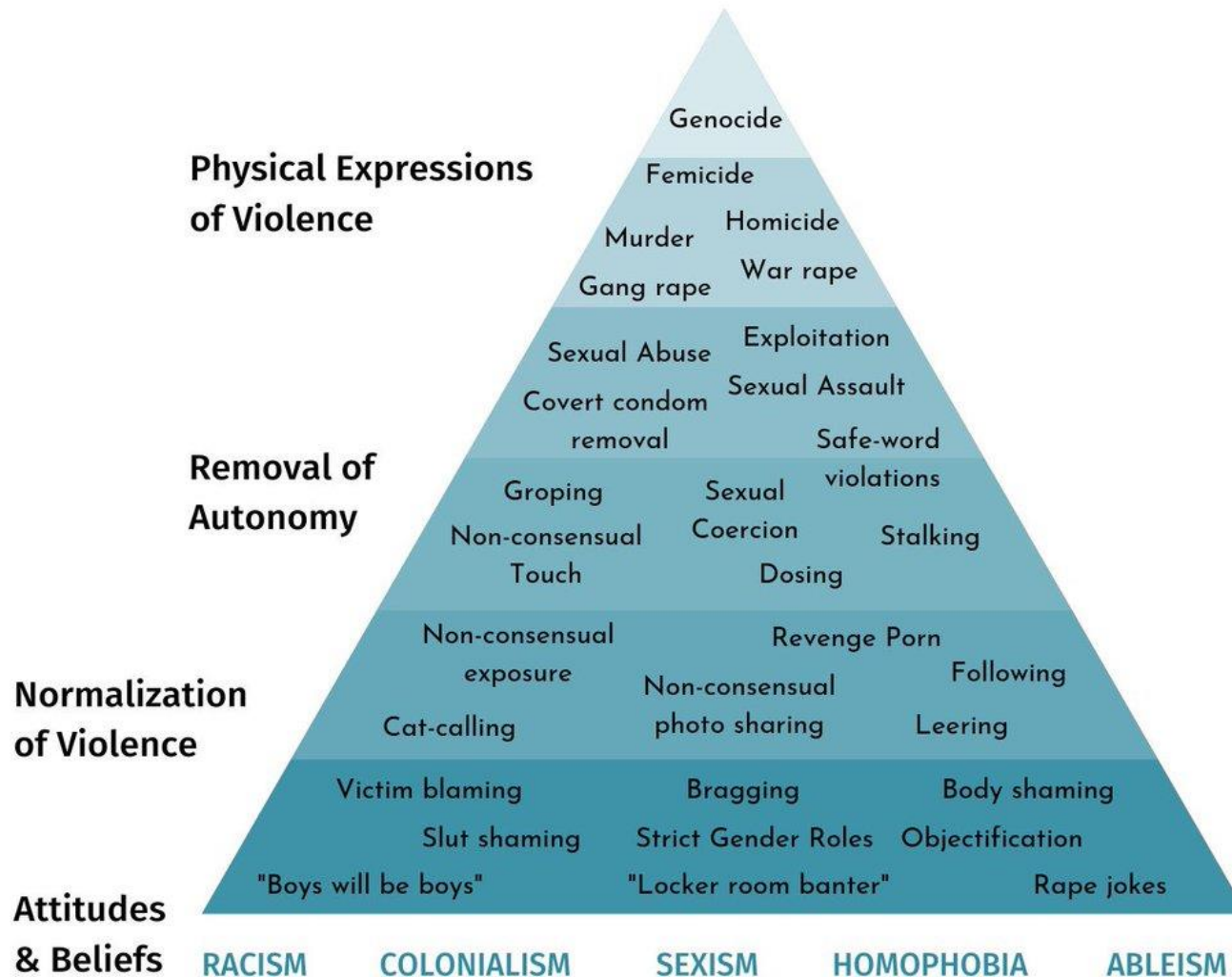
Q. Where and how does VAWG begin?



Q. Where can it lead?

Q. What is the journey between?

# Pyramid of Sexual Violence





# Impact of VAWG

Isolation

Shame

Vulnerability

Low self-esteem

Low attainment

Increased Risk:

Drugs & Alcohol

Unhealthy  
relationships

Self Harm &  
Suicide



# Prevent!

Prevention starts with:

- Challenging attitudes and beliefs
- Challenging traditional gender stereotypes
- Educating young people around healthy relationships, consent and control
- Challenging sexist language and behaviour
- All of us!

# What Gets In The Way of VAWG Prevention in Your School





# Known Barriers and Challenges to VAWG Prevention



- Curriculum pressures
- Lack of staff confidence
- Normalisation of VAWG behaviour
  - Victim blaming
- Young people's lack of language around VAWG and consent
- Unclear procedures for responding to VAWG
- Community pressures: from parents, carers and wider community around educating young people on VAWG

The role of schools is crucial to VAWG awareness and should include:

- Prevention
- Support
- Safety





Is Kindness  
the Key?

RANDOM acts  
of  
KINDNESS

#RAK2015

“Kindness is the language which the deaf  
can hear and the blind can see”

– Mark Twain

<https://www.youtube.com/watch?v=J2ueW1Q8ADc>



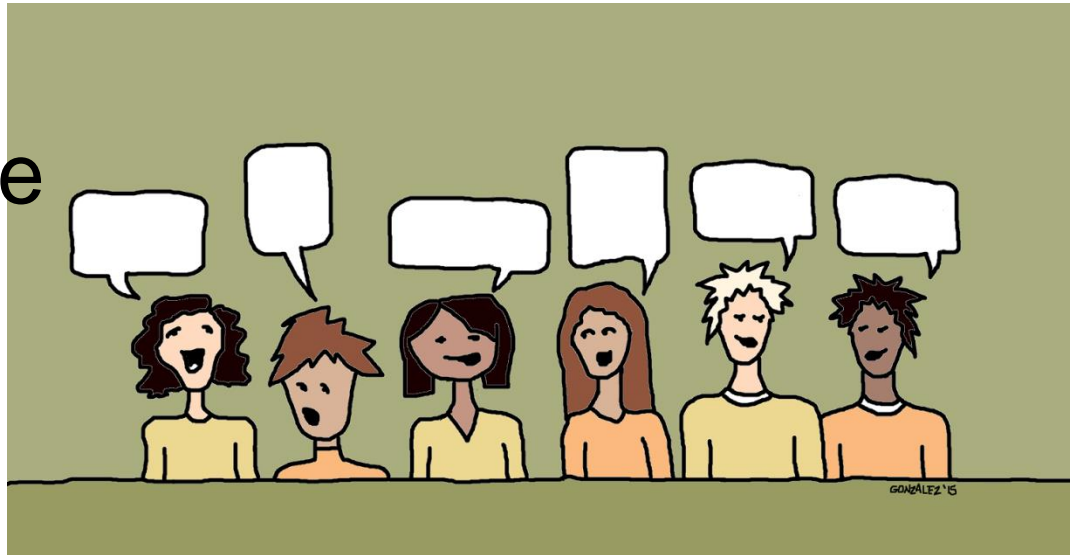


# A Whole School Approach Includes:

- Celebrating similarity, difference and diversity
- Anti-bullying and equality policies that prevent, challenge and record all forms of prejudice based incidents incl. VAWG
- A curriculum that explores, understands and prevents stereotypes, prejudice, and violence incl. VAWG
- Positive relationships with pupils that include listening and responding to individual needs
- Working with parents to increase awareness of & confidence around VAWG
- Pupils engaged in campaigning for equalities
- Ongoing staff training on awareness of & response to VAWG
- Embedded messages about gender equality, human rights & child protection
- Top down, bottom up approach to VAWG prevention, support and safety

# Discuss:

- Which parts of the Whole School Approach does your school do well?
- What areas can be improved?





# Encourage reporting

- Understand why it may not be reported
- Ensure there are clear procedures for staff
- Record incidents of discriminatory language by type
- Record the location to identify hotspots
- Pupils must be able to report in different ways:
  - to designated members of staff
  - via anonymous reporting points in each classroom, the school intranet, or confidential email service
  - other staff that pupils come in contact with
- Review and monitor the data



# Curriculum Tips

- Dispel stereotypes and assumptions
- Discuss gender roles and sexist language
- Challenge negative views
- Ensure lessons include examples of how minority communities are impacted, including BME, LGBT+ and disabled young people

Students should be taught about the concepts of, and laws relating to:

- sexual consent
- sexual abuse and exploitation
- grooming
- harassment
- domestic abuse
- coercive and controlling behaviour





# Summary

There's been an undeniable  
truth  
Since before we even existed;  
Nothing ever stays the same.  
Change cannot be resisted.

Ms Moem



# Resources

- <https://www.pshe-association.org.uk>: disrespect-nobody: Abuse within relationships; also resources on FGM
- <http://www.peerproductions.co.uk>: Forced Marriage
- <https://www.fpa.org.uk>: CSE
- <https://www.signhealth.org.uk/our-projects/deafhope-projects/prevention-videos/> short videos on Sexting, FGM, Honour based Violence and Abuse
- <https://www.barnardosrealoverocks.org.uk/dashboard/> CSE and Healthy relationships