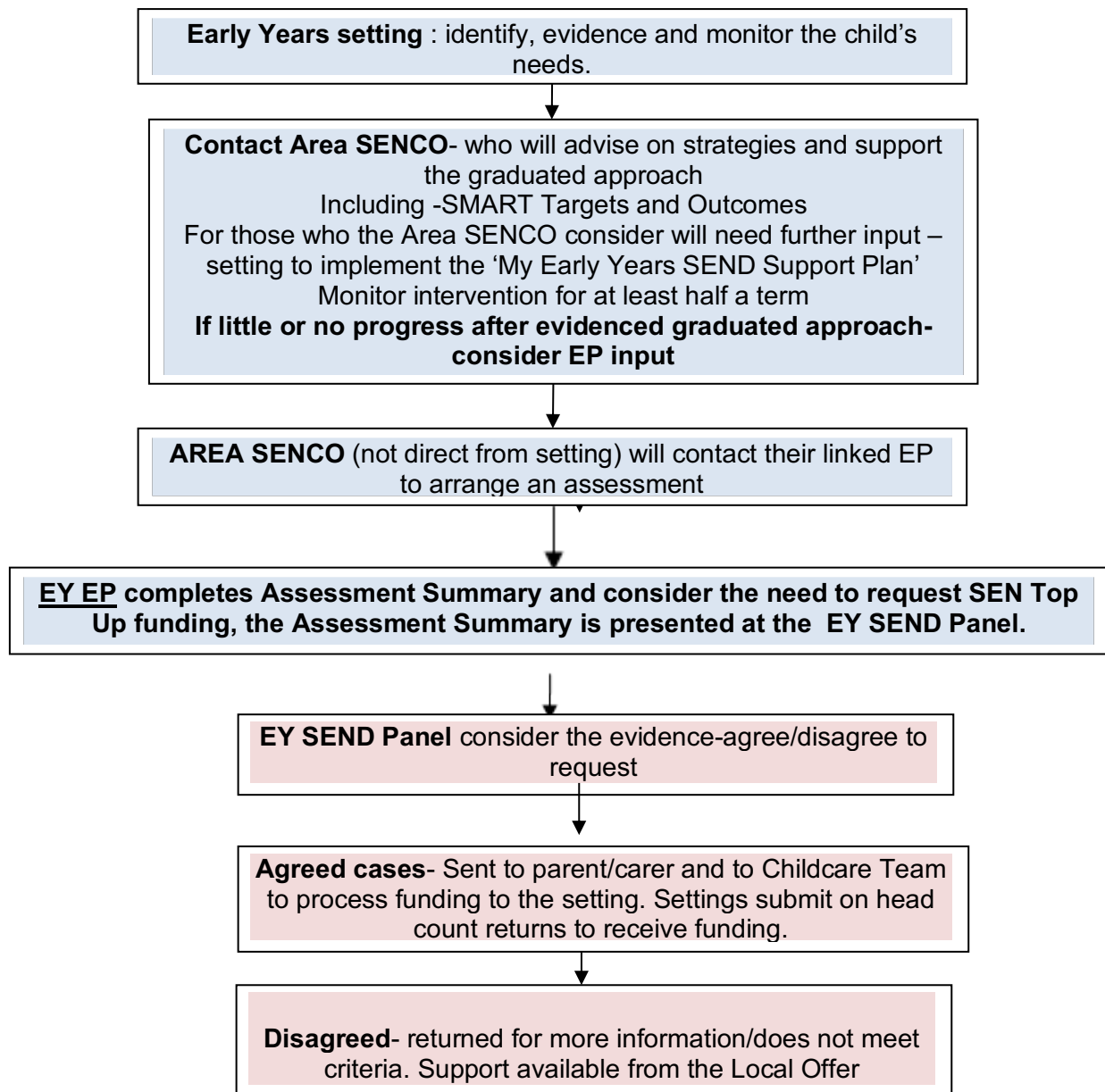


Early Years PVI Settings- SEND SUPPORT

EARLY YEARS P.V.I. SETTINGS- SEND SUPPORT



L.A Checks

Area SENCO/EP's to check the graduated approach prior to assessing children for the purpose of additional funding requests

PVI's calling EP's direct- the EP will check with the AREA SENCO whether the child is known to them and whether they have seen the evidence of the settings intervention.

Maintained Early Years Nurseries

These settings do not have an Area SENCO, the school SENCO will contact the EP service direct for an EP assessment. They also need to evidence their graduated approach-Smart Targets- with evidence of intervention

*EY SEND SUPPORT PLANS- with at least $\frac{1}{2}$ terms evidence of graduated approach

*Involvement of parents from the start